

2004 Pension Adjustments (PAs)

Table of contents

2004 Pension Adjustments (PAs)	1
Notes and changes for 2004	1
• 2004 figures	1
• Maximum pension	1
• School boards	1

Calculating pension adjustments (PAs)	2
Step 1: Benefit entitlement (BE)	2
• Maximum benefit entitlement	2
Step 2: Pension adjustment	3

Special situations	4
Common situations requiring special handling	4
BE and PA calculations for part years	5
• Disability waiver	6
• 35 years of credited service	6
Leave periods	7
• Broken service	7
• Pregnancy and parental leaves	7
• Prescribed compensation	8
• Maximum leave for PA purposes	8
Disability elimination periods	8
Retroactive and pay equity payments	9
Carryover pay, payroll timing and regular performance supplements	10
Retirement compensation arrangement	11
Multiple T4s, jobs, or employers	12

Past service purchases	13
-------------------------------	-----------

The PA Calculator	14
Instructions	14
Description of precalculated fields	16

The PA tables	17
Instructions for the one-month table	17
• OTCFT employees	18
• Maximum PA	18
Instructions for the 12-month table	18

One-month PA table	19
---------------------------	-----------

12-month PA table	28
--------------------------	-----------

Help available	37
-----------------------	-----------

2004 Pension Adjustments (PAs)

All employers who participate in a registered pension plan must calculate a pension adjustment (PA) for each plan member (this now includes covered elected officials and councillors). This guide describes what a PA is and what its components are, and how to calculate PA amounts for different scenarios.

The OMERS 2004 **PA Calculator** can be downloaded from our web site. It is a Microsoft Excel spreadsheet programmed to calculate OMERS PAs. Simply enter the member's 2004 credited service and contributory earnings, and you will get the PA. You can also order the PA Calculator on disk from employer@omers.com.

You can also use the PA tables at the back of this booklet to calculate PAs.

- Use the one-month table for members with any amount of credited service.
- Use the 12-month table only for members who have 12 months of credited service.

Notes and changes for 2004

The PA is a member's total pension credits for the year. It measures the level of retirement savings in a year by or for a member of a registered pension plan. A member's PA in a year reduces the maximum amount they can deduct for RRSP contributions for the next year.

2004 figures

The following figures are for 2004 PA calculations.

- 2004 Year's Maximum Pensionable Earnings (YMPE): \$40,500
- 2004 benefit entitlement (BE) maximum: \$1,833.33 (This amount will be increased in 2005, and then indexed to the average industrial wage [AIW] in 2006.)
- 2004 maximum pension adjustment (PA): \$15,900
- 2004 maximum registered pension plan (RPP) earnings: \$105,335.25
- The 2004 RRSP "new contribution room" limit is \$15,500 per year. Subsequent years' limits are:

2005	2006	2007
\$16,500	\$18,000	indexed to the AIW

Important!

Be sure to advise your payroll department or payroll provider of changes in the PA calculation.

Maximum pension

The maximum pension limit does not affect the PA calculation method. Calculate the PA using a member's actual contributory earnings (see example 9, page 11).

School boards

OMERS and the Ontario Teachers' Pension Plan calculate credited service differently. Be sure to use the OMERS method when calculating PAs for OMERS members.

Calculating pension adjustments

Do the calculation in two steps. Using the OMERS benefit entitlement formula, calculate the BE (Step 1). Then calculate the pension adjustment using the PA formula (Step 2).

Step 1: Benefit entitlement (BE)

The OMERS benefit entitlement formula approximates the amount of lifetime pension earned by the member during the year.

$$\text{BE} = 1.325\% \times \text{Contributory earnings up to the YMPE} + 2\% \times \text{Contributory earnings over the YMPE}$$

OMERS BE formula

* 1.325% of earnings up to the YMPE, plus 2% of earnings over the YMPE reflects the OMERS benefit formula, which is integrated with the Canada Pension Plan (CPP).

An OMERS member has 12 months of credited service and contributory earnings of \$42,000 in 2004. The YMPE for 2004 is \$40,500.

Year	Calculation
BE 2004	$1.325\% \times \$40,500 + [2\% \times (\$42,000 - \$40,500)] = \566.63

The BE of \$566.63 will be used to calculate the PA.

Example 1
Benefit entitlement calculation (earnings above the YMPE)

An OMERS member has 12 months of credited service and contributory earnings of \$20,000 in 2004 (less than the YMPE of \$40,500).

Year	Calculation
BE 2004	$1.325\% \times \$20,000 = \265

Because the member's contributory earnings are less than the YMPE, use only the first part of the BE equation. Therefore, the BE of \$265 will be used to calculate the PA.

Example 2
Benefit entitlement calculation (earnings below the YMPE)

Maximum benefit entitlement

The 2004 maximum BE for PA purposes is \$1,833.33, even if the member earns a pension benefit greater than this amount.

Step 2: Pension adjustment

Once you have calculated the BE, calculate the pension adjustment (PA).

$$PA = 9 \times \text{Benefit entitlement (BE)} - \$600$$

PA formula for members with 12 months of credited service

An OMERS member has contributory earnings of \$42,000 in 2004.
The 2004 YMPE is \$40,500.

	Year	Calculation
BE	2004	$(1.325\% \times \$40,500) + [2\% \times (\$42,000 - \$40,500)] = \566.63
PA	2004	$(9 \times \$566.63) - \$600 = \$4,500$ (rounded to the nearest dollar)

Example 3
Pension adjustment calculation

If the member's PA exceeds the PA maximum (\$15,900 for 2004), report the maximum PA on the member's T4.

The PA is always rounded to the nearest dollar. It cannot be a negative number. If your calculation works out to be a negative number, the PA is zero (0).

Special situations

Common situations requiring special handling

Special rules apply if a member does not earn 12.00 months of credited service in a calendar year. Report a PA for less than 12.00 months of credited service if, in the year, a member:

- is hired after January 1, 2004
- is an other-than-continuous full-time (OTCFT) employee (includes 10-month employees)
- retires, terminates, or is laid off
- does not purchase a disability elimination period that occurred during the year
- is on disability waiver (OMERS will calculate and report the member's PA for the disability waiver period separately)
- is on any authorized leave of absence or legal strike and elects not to purchase or is undecided about whether to purchase the leave as credited service
- is on a pregnancy or parental leave and elects not to purchase the leave as credited service
- attains 35.00 years of credited service and stops contributing for part of the year.

In addition, treat the PA differently for:

- members who died during the year
- terminated or retired members receiving retroactive pay (including carryover pay or regular performance supplements) or pay equity payments of contributory earnings.

BE and PA calculations for part years

If a member receives less than 12.00 months of credited service during a year, both the BE and the \$600 components of the PA calculation must be pro-rated for the months of credited service.

Contributory earnings must be annualized for the BE calculation.

A member has 6.58 months of credited service in 2004, and contributory earnings of \$20,000.

Note: The method you use to calculate the credited service does not affect the PA calculation.

Example 4
Pension adjustment calculation for less than 12 months

1. Annualize the member's contributory earnings:

Divide the member's contributory earnings by the number of months of credited service and multiply by 12.00 months.
 $(\$20,000 \div 6.58) \times 12.00 = \$36,474.12$ (annualized contributory earnings)

2. Calculate the annualized BE:

$$1.325\% \times \$36,474.12 = \$483.28$$

Since the member's contributory earnings are lower than the YMPE, use only the first part of the BE formula. See example 2 on page 2.

If the member's annualized BE exceeds the maximum BE (\$1,833.33 for 2004) at this point, carry the maximum BE into Step 4.

3. Pro-rate the BE for the actual months of credited service:

$$\begin{aligned} &\text{Annualized (or maximum) BE} \times (\text{months of credited service} \div 12.00 \text{ months}) \\ &\$483.28 \times (6.58 \div 12.00) = \$265 \end{aligned}$$

4. Pro-rate \$1,833.33 (2004 maximum BE) to reflect the member's credited service:

$$\$1,833.33 \times (6.58 \div 12.00) = \$1,008.33$$

5. Calculate the PA using the pro-rated or maximum BE from steps 3 and 4 (whichever is lower) and pro-rate the \$600:

$$\begin{aligned} \text{PA} &= 9 \times \text{BE} - [\$600 \times (\text{months of credited service} \div 12.00 \text{ months})] \\ &= 9 \times \$265 - [\$600 \times (6.58 \div 12.00)] \\ &= \$2,056 \end{aligned}$$

If the member's PA exceeds the PA maximum (\$15,900 for 2004) report the maximum PA on the member's T4 and the Form 119.

Disability waiver

You must calculate the PA and issue a T4 for that part of the year during which a member was at work and contributing to OMERS, as well as for any disability elimination period purchased. (OMERS will calculate the PA and issue a T4A for the disability waiver period, including members on a disability waiver with an approved rehabilitative employment program.) The elimination period is normally the time between the date a member's disability occurs and the date any OMERS disability benefit (pension or waiver) begins.

We need current information, including addresses, for members on disability waiver or in rehabilitation programs. Please promptly report changes for members on disability waiver.

A member was disabled from February 1 through November 30 and purchased two months of the disability elimination period. The waiver was effective June 1.

Calculate the 2004 PA for the two months credited service	January and December
Add two months purchased elimination period	February and March
No PA is reported for the unpurchased elimination period	April and May
OMERS reports a PA for the waiver period	June 1 through November 30

Example 5
Disability elimination period and waiver of contribution

35 years of credited service

Once a member reaches 35.00 years (420.00 months) of credited service, they no longer accrue credited service in OMERS. Report a PA only for the service up to the date that the member reaches 420.00 months of credited service. Report a PA of "nil" on the T4s for members who have reached 35.00 years of credited service in a prior reporting year.

A member works 12 complete months in 2004, with contributory earnings of \$30,000. On April 20, 2004 the member accrues 35.00 years (420.00 months) of credited service.

Calculate the 2004 PA for the 3.62 months of credited service	January 1 through April 20
No contributions are made after April 20	April 21 through December 31
No PA is reported for the period	April 21 through December 31
A PA of "nil" is reported for	2005 and later years

Example 6
35 years of credited service

Leave periods

Report the PA on the member's T4 or a revised PA on an amended T4, for each year in which the leave or period of reduced pay occurs.

PAs and revised PAs are always reported for the calendar year in which the service occurs. For leaves extending over two or more years, report a PA for each year.

Broken service

The basic rule:

Do NOT include broken service (including emergency leaves) in the PA unless the member elects to buy all or part of the leave.

The details:

If a member elects to buy the leave:	PA reporting:
On or before April 30 of the year following the year in which the leave ends (CCRA deadline).	Include the leave in the member's PA. If the member's T4 is already issued, recalculate the PA and re-issue the T4 with the revised PA. If your Form 119 is submitted, notify us in writing of the revised PA.
After April 30 of the year following the year in which the leave ends.	OMERS will apply to CCRA for a past service pension adjustment (PSPA).

Important!

If the member elects to buy the leave before the CCRA deadline, but does not pay for it by the OMERS purchase deadline (December 31 of the year following the year in which the leave ends), the PA reported for each affected year will stand, even though the member doesn't acquire the service.

For periods of leave or reduced pay that started before the contribution holiday began (August 1998) and end in 2004, the member must:

- complete and sign a leave period election form by April 30, 2005. (If the election occurs after April 30, OMERS must have the CCRA certify a past service pension adjustment [PSPA].)
- pay by the OMERS deadline of December 31, 2005 (the year following the year in which the leave ended).

Pregnancy and parental leaves

The basic rule:

Assume the member will purchase a pregnancy/parental leave and include it in the PA unless the member elects NOT to purchase the leave.

The details:

If a member elects not to buy a leave period after you have submitted the T4 to CCRA the PAs cannot be revised. The PA reported for each affected year will stand, even though the member doesn't acquire the service.

If a member initially elects not to purchase a pregnancy/parental leave and subsequently elects to purchase it:

- **on or before April 30** of the year following the year in which the pregnancy/parental leave ends, include the leave in the member's PA:
 - If the member's T4 is already issued, recalculate the PA and re-issue the T4 with the revised PA.
 - If your Form 119 is submitted, notify us in writing of the revised PA.
- **after April 30** of the year following the year in which the pregnancy/parental leave ends, OMERS will report a past service pension adjustment (PSPA) to CCRA for approval.

Prescribed compensation

The CCRA requires that the PA be calculated on compensation equal to the contributory earnings the member would have received had there been no leave or period of reduced pay.

If a member who is on leave would normally have received a pay increase during the period, the earnings on which the PA is calculated must include the increase. This is the member's "prescribed compensation."

Maximum leave for PA purposes

Once a member reaches the maximum leave for PA purposes, the PA process no longer applies. Leave periods beyond the maximum fall under PSPA rules, and will be handled by OMERS.

OMERS keeps track of the total leave purchased by members and will advise you when a member approaches their maximum leave allowance.

Maximum leave for PA purposes	=	Five years of any authorized leave	+	An additional three years for parental leave by either parent following the birth or adoption of a child (maximum 12 months per event)	Maximum leave for PA purposes
----------------------------------	---	---------------------------------------	---	---	----------------------------------

Disability elimination periods

A member may purchase a disability elimination period only until December 31 of the year in which the elimination period occurred.

When a member elects to purchase all or part of a disability elimination period, the employer must pay the normal matching contributions, and the member's cost is calculated using **deemed earnings**. Calculate the member's PA and issue the T4 as if the purchased period were part of the regular credited service. Use the member's **prescribed compensation** as the earnings for the purchased period when calculating the PA.

If a member chooses **not** to buy the disability elimination period, calculate the PA and issue the T4 for the actual months of credited service and annualized contributory earnings for the year.

Retroactive and pay equity payments

Note: retroactive and pay equity payment information are reported differently for OMERS and the CCRA. Report for OMERS as described in the *Annual report of membership information (Form 119)* booklet. When a member receives a retroactive or pay equity payment of contributory earnings, recalculate the PA to reflect the additional earnings.

If the payment is received during a year in which the member also received contributory earnings, add the contributory earnings for the retroactive payment to the member's regular contributory earnings for the year in which the payment is received and calculate the PA. When calculating the PA, do not allocate retroactive payments to past years (as you would for the OMERS Form 119). Report the PA on the member's T4, even if the member retired or terminated during the year.

If a member has retired or terminated, recalculate the PA including the retroactive contributory earnings for the last year for which you calculated a PA. Do not allocate a retroactive and pay equity payment to the years the payment covers. Subtract the original PA from the new, recalculated PA. Report the difference between the two PAs on a T4 in the year in which the payment was received.

The CPP offset formula improvement that was approved in 2000 affects the BE part of the PA calculation. If the member retired:

- in 2000 or later, use 1.325% in the BE calculation
- in 1999 or earlier, use 1.3% in the BE calculation.

Let's say you last calculated a 1999 PA of \$1,506 on contributory earnings of \$18,000 for a member who retired on December 31, 1999. In 2004 the member contributes to OMERS on a retroactive payment of \$3,000. Recalculate the 1999 PA using the appropriate 1999 figures, as follows:

$$\text{BE} = 1.3\% * \times \$21,000 \quad = \$273$$

$$\text{PA} = 9 \times \$273 - \$600^{**} \quad = \$1,857$$

Subtract the original PA of \$1,506 from the new PA of \$1,857 and report the difference, \$351, as the PA on a 2004 T4.

* On January 1, 2000, 1.3% changed to 1.325% in the BE calculation. For a member who retired in 2000 or later, use 1.325% in the BE calculation.

** The offset in the PA formula changed from \$1,000 to \$600 as of January 1, 1997. For a member who retired before 1997, use a \$1,000 offset in the PA formula.

Reminder
Report the change in earnings and PA on your Form 119

Example 7
PA for post-retirement retroactive pay

A retroactive or pay equity payment does not always affect a member's benefit entitlement. The BE and PA are not recalculated if a PA would normally not have been calculated. For example:

- when the member is already at the maximum BE for the year in which the pay is to be included; or
- when the member has accrued 35 years of service and the last PA reported was nil.

Where a member has a leave period or has been on disability waiver during a year in which you must calculate a PA for a retroactive or pay equity payment, special rules apply. Please call OMERS for assistance.

Carryover pay, payroll timing and regular performance supplements

If a member terminates employment one year and receives their last pay in the following year, treat the carryover pay like a retropayment.

Step 1: Calculate and report the PA in the year the member terminates employment. Do not include the carryover pay in the calculation.

Step 2: In the following year, recalculate the prior year's PA with the carryover included.

Step 3: Subtract the original PA from the new, recalculated PA. Report the difference on a T4 in the year the carryover was paid.

An OMERS member terminates employment in December 2003 and receives her last pay in January 2004.

	2003	2004
Contributory earnings	\$40,000	\$1,380 (carryover)
Credited service	12 months	0
PA reported on T4	\$4,176	see below
PA adjusted in 2004		
Contributory earnings	\$41,380	
Credited service	12 months	
PA reported on 2004 T4		\$4,424 – \$4,176 = \$248

Example 8
PA for carryover pay

Treat regular performance supplements (such as variable pay) like retro pay when they are paid in a year following the year the member terminates.

Retirement compensation arrangement

Calculate PAs for high-earning members making contributions to the retirement compensation arrangement (RCA) exactly as you would for any other member.

Members in this earnings range may reach or surpass the maximum PA limit (\$15,900 for 2004), even if their credited service is less than 12.00 months. If a member receives less than 12.00 months of credited service during a year, both the BE and the \$600 components of the PA calculation must be pro-rated for the months of credited service.

Contributory earnings must be annualized for the BE calculation.

An OMERS member has 7.00 months of credited service and contributory earnings of \$150,000 in 2004. The YMPE is \$40,500.

1. Annualize the member's contributory earnings:

Divide the member's contributory earnings by the number of months of credited service and multiply by 12.00 months.

$$(\$150,000 \div 7.00) \times 12.00 = \$257,142.84 \text{ (annualized contributory earnings)}$$

2. Calculate the annualized BE:

$$\text{BE} = 1.325\% \times \$40,500 + [2\% \times (\$257,143 - \$40,500)] = \$4,869.49$$

Since the member's annualized BE exceeds the maximum BE (\$1,833.33 for 2004), carry the maximum BE to the next step.

3. Pro-rate \$1,833.33 (2004 maximum BE) to reflect the member's credited service:

$$\$1,833.33 \times (7.00 \div 12.00) = \$1,069.44$$

4. Calculate the PA using the pro-rated maximum BE and pro-rate the \$600:

$$\begin{aligned} \text{PA} &= 9 \times \text{BE} - [\$600 \times (\text{months of credited service} \div 12.00 \text{ months})] \\ &= 9 \times \$1,069.44 - [\$600 \times (7.00 \div 12.00)] \\ &= \$9,275 \end{aligned}$$

Report the PA of \$9,275 on the member's T4 and the Form 119.

If the member's PA exceeds the PA maximum (\$15,900 for 2004) report the maximum PA on the member's T4.

Example 9
PA calculation
for RCA pension

Multiple T4s, jobs, or employers

Two (or more) T4s may need to be issued to an employee in one taxation year to comply with Workplace Safety and Insurance Board (WSIB) or Human Resources Development Canada (HRDC) regulations. For example, issue two T4s if an employee holds two separate jobs, or where a member terminates and is rehired during the year.

The CCRA requires that separate PAs be reported when two T4s are issued. Calculate the PAs for the less than 12 months of service represented on each T4. The two PAs added together should equal the PA the member would have received had you calculated only one PA and issued one T4 for the year.

The maximum credited service with a single employer allowed in one calendar year for PA purposes is 12.00 months. If a member holding two jobs (and/or two T4s) with a single employer earns more than 12.00 months of credited service in a year, please ask the CCRA or OMERS for assistance.

Two or more PAs for credited service with one employer may not exceed the PA maximum for the year (\$15,900 in 2004) when added together. If they do, ask OMERS for assistance.

If a member works for more than one employer, each employer calculates the member's PA independently. Do not co-ordinate PAs with another employer.

Past service purchases

The Income Tax Act contains complex rules, limits and processes for dealing with past service, optional service or buy-back purchases.

OMERS will calculate and report to the CCRA a past service pension adjustment (PSPA) for any post-1989 service credited to a member as past or optional service (including broken service a member elects to purchase after the CCRA deadline).

Report the member's election to purchase past service to OMERS on the appropriate election form. Do not revise PAs or T4s when the service is purchased as past service under CCRA rules. OMERS will apply to the CCRA for certification of a PSPA.

The CCRA must certify the PSPA before the purchase can be completed and before OMERS can include the purchased service in any benefit calculation.

A PSPA greater than zero will be subtracted from the member's RRSP room. A member who wishes to purchase post-1989 past service may need to deregister RRSP funds to create room for a PSPA before the service purchase can be completed.

Different rules apply when a member purchases pre-1990 service. Please refer to the *OMERS Administration Manual* for details.

The PA Calculator

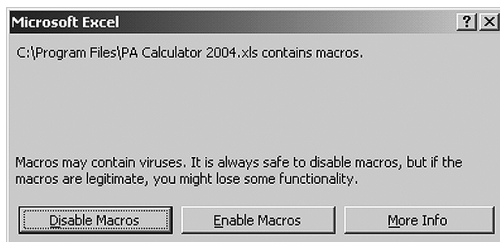
The PA Calculator is an Excel spreadsheet. Use it to calculate PAs for both NRA 60 and NRA 65 members. Normal retirement age does not affect PA calculations.

Record the PA in Box 52 on the member's 2004 T4.

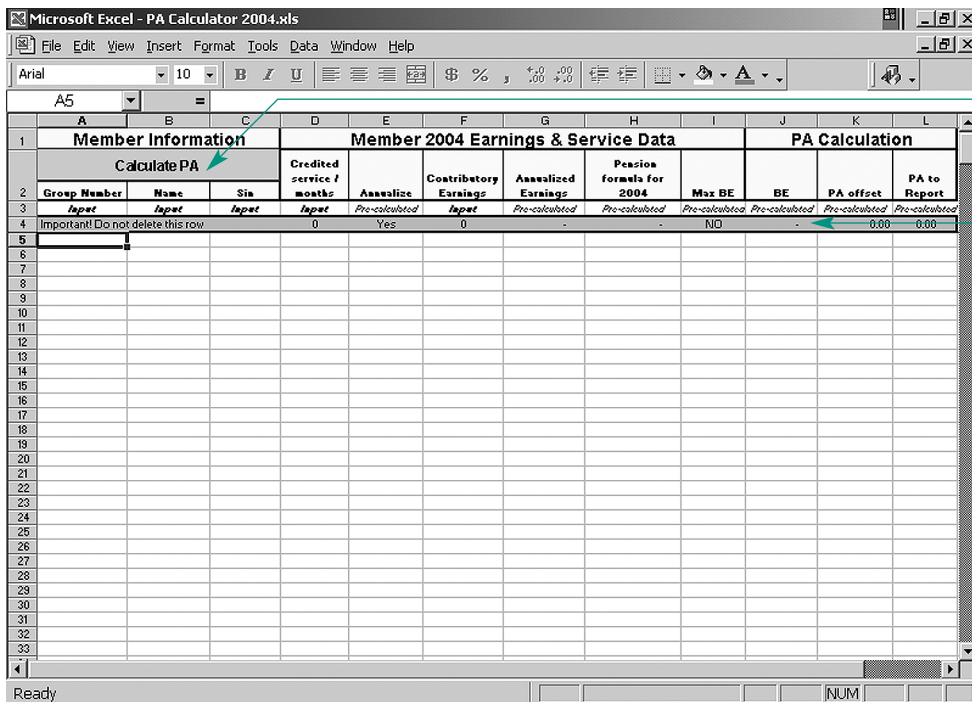
Instructions

Have ready the member's 2004 credited service and contributory earnings.

1. Open the file. If you get the following message, click **Enable Macros**:



2. Click **Calculate PA**.



Click Calculate PA

Do not delete this row (#4). The PA formulas are contained here, and the spreadsheet will not work if these are deleted or modified.

3. The following form appears:

The image shows a dialog box titled "Calculate PA" with a close button (X) in the top right corner. The dialog box contains six input fields, each with a label to its left: "Group Number", "Name", "SIN #", "Credited service/months", "Contributory Earnings", and "PA to Report". Below these fields are two buttons: "ADD to Sheet" and "Exit to Sheet".

4. Enter:

- group number (optional)
- member's name (optional)
- member's SIN (optional) Tip: include the SIN if you are going to use the spreadsheet to import to the PC119 program.
- member's 2004 credited service in months, rounded to two decimal places
- member's 2004 contributory earnings.

The PA will appear in the last field. Round the answer to the nearest dollar. If you click **Add to Sheet**, the information you entered and the PA will be saved and recorded on the spreadsheet. Continue doing another PA calculation by entering new data.

5. Click **Exit to Sheet** to return to the spreadsheet.

On the spreadsheet will be:

- the data you input
- the PA calculations you added to the spreadsheet in the order they were entered
- the numbers used in the BE and PA calculation (refer to the chart on page 16 for explanations).

Description of precalculated fields

Annualize	Indicates whether the contributory earnings used in the BE calculation are annualized (Yes or No).
Annualized earnings	Contributory earnings used in the BE calculation (annualized when a member has less than 12.00 months of credited service).
Pension formula for 2004	The accrued OMERS pension benefit for 2004 (the BE pro-rated for members with less than 12.00 months of credited service).
Max BE	Indicates whether the BE is over the 2004 maximum of \$1,833.33 (Yes or No).
BE	Benefit entitlement
PA offset	\$600 for members with 12.00 months of credited service (pro-rated for members with less than 12.00 months of credited service).
PA to report	The member's PA (round this amount to the nearest dollar).

The PA tables

There is a one-month and a 12-month PA table:

- Use the one-month table for members with any amount of credited service (0.01 months to 12.00 months).
- Use the 12-month table at the end of 2004 for continuous full-time members who have 12.00 months of credited service.

The tables can be used for both NRA 60 and NRA 65 members. Normal retirement age does not affect PA calculations.

Record the PA in Box 52 on the member's 2004 T4.

Instructions for the one-month table

Use the member's 2004 credited service (Step 1) and actual monthly contributory earnings (Step 2). Then, identify the PA in the table corresponding to the monthly contributory earnings (Step 3). Multiply this PA by the 2004 credited service (Step 4), then round to the nearest dollar (Step 5).

A member terminates employment and membership in the plan on April 28, 2004. The member is a full-time employee who earns \$865.38 per week.

Step 1: Determine the 2004 credited service in months

= 17.00 weeks (Jan. 1 to Apr. 28) ÷ 52.00 weeks × 12.00
= 3.92 months
Calendar days, hours, pay periods or working days can also be used to calculate the credited service.

Step 2: Determine the actual monthly contributory earnings

= actual earnings ÷ months of credited service
= (17.00 × \$865.38) ÷ 3.92 months
= \$3,752.92

Step 3: Find the PA in the one-month PA table listed for the actual monthly contributory earnings

The PA listed for \$3,752.92 = \$420.42

Step 4: Multiply the PA by the 2004 credited service

= \$420.42 × 3.92 months
= \$1,648.04

Step 5: Round to the nearest dollar

= \$1,648

Example 10

Using the one-month PA table to calculate a PA

OTCFT employees

The same method works for OTCFT employees.

If the member from the previous example works only half the time of a full-time employee, they would have 1.96 months of credited service and earn:	$\frac{\$865.38}{2} \times 17.00 \text{ weeks} = \$7,355.73$
The monthly salary rate would be:	$\frac{\$7,355.73}{1.96 \text{ months}} = \$3,752.92$
The PA for \$3,752.92 is:	$\$420.42$
Multiply the PA by the 2004 credited service:	$\$420.42 \times 1.96 \text{ months} = \824.02
Rounded to the nearest dollar:	$\$824$

Example 11

Using the one-month PA table to calculate a PA for an OTCFT member

Maximum PA

The one-month table shows PAs calculated from \$0 to the maximum monthly salary of \$8,779.99. For employees whose monthly salary is \$8,780 or higher, use the monthly PA of \$1,325.00.

A member has 7.45 months of credited service and a monthly salary rate of \$9,000.	
The PA for 7.45 months of credited service	$= 7.45 \times \$1,325.00 = \$9,871.25$
Rounded to the nearest dollar	$= \$9,871$

Example 12

Using the one-month PA table to calculate PAs over the maximum

Instructions for the 12-month table

Use this table at the end of 2004 for full-time members with 12.00 months of credited service. Find the correct salary range of the actual contributory earnings and record the PA as required.

One-month PA table

Actual Contributory Earnings (\$)		Member PA (\$)	Actual Contributory Earnings (\$)		Member PA (\$)	Actual Contributory Earnings (\$)		Member PA (\$)	Actual Contributory Earnings (\$)		Member PA (\$)
400.00	404.99	0.00	650.00	654.99	27.81	900.00	904.99	57.62	1,150.00	1,154.99	87.44
405.00	409.99	0.00	655.00	659.99	28.41	905.00	909.99	58.22	1,155.00	1,159.99	88.03
410.00	414.99	0.00	660.00	664.99	29.00	910.00	914.99	58.82	1,160.00	1,164.99	88.63
415.00	419.99	0.00	665.00	669.99	29.60	915.00	919.99	59.41	1,165.00	1,169.99	89.22
420.00	424.99	0.38	670.00	674.99	30.20	920.00	924.99	60.01	1,170.00	1,174.99	89.82
425.00	429.99	0.98	675.00	679.99	30.79	925.00	929.99	60.60	1,175.00	1,179.99	90.42
430.00	434.99	1.58	680.00	684.99	31.39	930.00	934.99	61.20	1,180.00	1,184.99	91.01
435.00	439.99	2.17	685.00	689.99	31.98	935.00	939.99	61.80	1,185.00	1,189.99	91.61
440.00	444.99	2.77	690.00	694.99	32.58	940.00	944.99	62.39	1,190.00	1,194.99	92.21
445.00	449.99	3.36	695.00	699.99	33.18	945.00	949.99	62.99	1,195.00	1,199.99	92.80
450.00	454.99	3.96	700.00	704.99	33.77	950.00	954.99	63.59	1,200.00	1,204.99	93.40
455.00	459.99	4.56	705.00	709.99	34.37	955.00	959.99	64.18	1,205.00	1,209.99	93.99
460.00	464.99	5.15	710.00	714.99	34.97	960.00	964.99	64.78	1,210.00	1,214.99	94.59
465.00	469.99	5.75	715.00	719.99	35.56	965.00	969.99	65.37	1,215.00	1,219.99	95.19
470.00	474.99	6.35	720.00	724.99	36.16	970.00	974.99	65.97	1,220.00	1,224.99	95.78
475.00	479.99	6.94	725.00	729.99	36.75	975.00	979.99	66.57	1,225.00	1,229.99	96.38
480.00	484.99	7.54	730.00	734.99	37.35	980.00	984.99	67.16	1,230.00	1,234.99	96.98
485.00	489.99	8.13	735.00	739.99	37.95	985.00	989.99	67.76	1,235.00	1,239.99	97.57
490.00	494.99	8.73	740.00	744.99	38.54	990.00	994.99	68.36	1,240.00	1,244.99	98.17
495.00	499.99	9.33	745.00	749.99	39.14	995.00	999.99	68.95	1,245.00	1,249.99	98.76
500.00	504.99	9.92	750.00	754.99	39.74	1,000.00	1,004.99	69.55	1,250.00	1,254.99	99.36
505.00	509.99	10.52	755.00	759.99	40.33	1,005.00	1,009.99	70.14	1,255.00	1,259.99	99.96
510.00	514.99	11.12	760.00	764.99	40.93	1,010.00	1,014.99	70.74	1,260.00	1,264.99	100.55
515.00	519.99	11.71	765.00	769.99	41.52	1,015.00	1,019.99	71.34	1,265.00	1,269.99	101.15
520.00	524.99	12.31	770.00	774.99	42.12	1,020.00	1,024.99	71.93	1,270.00	1,274.99	101.75
525.00	529.99	12.90	775.00	779.99	42.72	1,025.00	1,029.99	72.53	1,275.00	1,279.99	102.34
530.00	534.99	13.50	780.00	784.99	43.31	1,030.00	1,034.99	73.13	1,280.00	1,284.99	102.94
535.00	539.99	14.10	785.00	789.99	43.91	1,035.00	1,039.99	73.72	1,285.00	1,289.99	103.53
540.00	544.99	14.69	790.00	794.99	44.51	1,040.00	1,044.99	74.32	1,290.00	1,294.99	104.13
545.00	549.99	15.29	795.00	799.99	45.10	1,045.00	1,049.99	74.91	1,295.00	1,299.99	104.73
550.00	554.99	15.89	800.00	804.99	45.70	1,050.00	1,054.99	75.51	1,300.00	1,304.99	105.32
555.00	559.99	16.48	805.00	809.99	46.29	1,055.00	1,059.99	76.11	1,305.00	1,309.99	105.92
560.00	564.99	17.08	810.00	814.99	46.89	1,060.00	1,064.99	76.70	1,310.00	1,314.99	106.52
565.00	569.99	17.67	815.00	819.99	47.49	1,065.00	1,069.99	77.30	1,315.00	1,319.99	107.11
570.00	574.99	18.27	820.00	824.99	48.08	1,070.00	1,074.99	77.90	1,320.00	1,324.99	107.71
575.00	579.99	18.87	825.00	829.99	48.68	1,075.00	1,079.99	78.49	1,325.00	1,329.99	108.30
580.00	584.99	19.46	830.00	834.99	49.28	1,080.00	1,084.99	79.09	1,330.00	1,334.99	108.90
585.00	589.99	20.06	835.00	839.99	49.87	1,085.00	1,089.99	79.68	1,335.00	1,339.99	109.50
590.00	594.99	20.66	840.00	844.99	50.47	1,090.00	1,094.99	80.28	1,340.00	1,344.99	110.09
595.00	599.99	21.25	845.00	849.99	51.06	1,095.00	1,099.99	80.88	1,345.00	1,349.99	110.69
600.00	604.99	21.85	850.00	854.99	51.66	1,100.00	1,104.99	81.47	1,350.00	1,354.99	111.29
605.00	609.99	22.44	855.00	859.99	52.26	1,105.00	1,109.99	82.07	1,355.00	1,359.99	111.88
610.00	614.99	23.04	860.00	864.99	52.85	1,110.00	1,114.99	82.67	1,360.00	1,364.99	112.48
615.00	619.99	23.64	865.00	869.99	53.45	1,115.00	1,119.99	83.26	1,365.00	1,369.99	113.07
620.00	624.99	24.23	870.00	874.99	54.05	1,120.00	1,124.99	83.86	1,370.00	1,374.99	113.67
625.00	629.99	24.83	875.00	879.99	54.64	1,125.00	1,129.99	84.45	1,375.00	1,379.99	114.27
630.00	634.99	25.43	880.00	884.99	55.24	1,130.00	1,134.99	85.05	1,380.00	1,384.99	114.86
635.00	639.99	26.02	885.00	889.99	55.83	1,135.00	1,139.99	85.65	1,385.00	1,389.99	115.46
640.00	644.99	26.62	890.00	894.99	56.43	1,140.00	1,144.99	86.24	1,390.00	1,394.99	116.06
645.00	649.99	27.21	895.00	899.99	57.03	1,145.00	1,149.99	86.84	1,395.00	1,399.99	116.65

One-month PA table

Actual Contributory Earnings (\$)		Member PA (\$)	Actual Contributory Earnings (\$)		Member PA (\$)	Actual Contributory Earnings (\$)		Member PA (\$)	Actual Contributory Earnings (\$)		Member PA (\$)
1,400.00	1,404.99	117.25	1,650.00	1,654.99	147.06	1,900.00	1,904.99	176.87	2,150.00	2,154.99	206.69
1,405.00	1,409.99	117.84	1,655.00	1,659.99	147.66	1,905.00	1,909.99	177.47	2,155.00	2,159.99	207.28
1,410.00	1,414.99	118.44	1,660.00	1,664.99	148.25	1,910.00	1,914.99	178.07	2,160.00	2,164.99	207.88
1,415.00	1,419.99	119.04	1,665.00	1,669.99	148.85	1,915.00	1,919.99	178.66	2,165.00	2,169.99	208.47
1,420.00	1,424.99	119.63	1,670.00	1,674.99	149.45	1,920.00	1,924.99	179.26	2,170.00	2,174.99	209.07
1,425.00	1,429.99	120.23	1,675.00	1,679.99	150.04	1,925.00	1,929.99	179.85	2,175.00	2,179.99	209.67
1,430.00	1,434.99	120.83	1,680.00	1,684.99	150.64	1,930.00	1,934.99	180.45	2,180.00	2,184.99	210.26
1,435.00	1,439.99	121.42	1,685.00	1,689.99	151.23	1,935.00	1,939.99	181.05	2,185.00	2,189.99	210.86
1,440.00	1,444.99	122.02	1,690.00	1,694.99	151.83	1,940.00	1,944.99	181.64	2,190.00	2,194.99	211.46
1,445.00	1,449.99	122.61	1,695.00	1,699.99	152.43	1,945.00	1,949.99	182.24	2,195.00	2,199.99	212.05
1,450.00	1,454.99	123.21	1,700.00	1,704.99	153.02	1,950.00	1,954.99	182.84	2,200.00	2,204.99	212.65
1,455.00	1,459.99	123.81	1,705.00	1,709.99	153.62	1,955.00	1,959.99	183.43	2,205.00	2,209.99	213.24
1,460.00	1,464.99	124.40	1,710.00	1,714.99	154.22	1,960.00	1,964.99	184.03	2,210.00	2,214.99	213.84
1,465.00	1,469.99	125.00	1,715.00	1,719.99	154.81	1,965.00	1,969.99	184.62	2,215.00	2,219.99	214.44
1,470.00	1,474.99	125.60	1,720.00	1,724.99	155.41	1,970.00	1,974.99	185.22	2,220.00	2,224.99	215.03
1,475.00	1,479.99	126.19	1,725.00	1,729.99	156.00	1,975.00	1,979.99	185.82	2,225.00	2,229.99	215.63
1,480.00	1,484.99	126.79	1,730.00	1,734.99	156.60	1,980.00	1,984.99	186.41	2,230.00	2,234.99	216.23
1,485.00	1,489.99	127.38	1,735.00	1,739.99	157.20	1,985.00	1,989.99	187.01	2,235.00	2,239.99	216.82
1,490.00	1,494.99	127.98	1,740.00	1,744.99	157.79	1,990.00	1,994.99	187.61	2,240.00	2,244.99	217.42
1,495.00	1,499.99	128.58	1,745.00	1,749.99	158.39	1,995.00	1,999.99	188.20	2,245.00	2,249.99	218.01
1,500.00	1,504.99	129.17	1,750.00	1,754.99	158.99	2,000.00	2,004.99	188.80	2,250.00	2,254.99	218.61
1,505.00	1,509.99	129.77	1,755.00	1,759.99	159.58	2,005.00	2,009.99	189.39	2,255.00	2,259.99	219.21
1,510.00	1,514.99	130.37	1,760.00	1,764.99	160.18	2,010.00	2,014.99	189.99	2,260.00	2,264.99	219.80
1,515.00	1,519.99	130.96	1,765.00	1,769.99	160.77	2,015.00	2,019.99	190.59	2,265.00	2,269.99	220.40
1,520.00	1,524.99	131.56	1,770.00	1,774.99	161.37	2,020.00	2,024.99	191.18	2,270.00	2,274.99	221.00
1,525.00	1,529.99	132.15	1,775.00	1,779.99	161.97	2,025.00	2,029.99	191.78	2,275.00	2,279.99	221.59
1,530.00	1,534.99	132.75	1,780.00	1,784.99	162.56	2,030.00	2,034.99	192.38	2,280.00	2,284.99	222.19
1,535.00	1,539.99	133.35	1,785.00	1,789.99	163.16	2,035.00	2,039.99	192.97	2,285.00	2,289.99	222.78
1,540.00	1,544.99	133.94	1,790.00	1,794.99	163.76	2,040.00	2,044.99	193.57	2,290.00	2,294.99	223.38
1,545.00	1,549.99	134.54	1,795.00	1,799.99	164.35	2,045.00	2,049.99	194.16	2,295.00	2,299.99	223.98
1,550.00	1,554.99	135.14	1,800.00	1,804.99	164.95	2,050.00	2,054.99	194.76	2,300.00	2,304.99	224.57
1,555.00	1,559.99	135.73	1,805.00	1,809.99	165.54	2,055.00	2,059.99	195.36	2,305.00	2,309.99	225.17
1,560.00	1,564.99	136.33	1,810.00	1,814.99	166.14	2,060.00	2,064.99	195.95	2,310.00	2,314.99	225.77
1,565.00	1,569.99	136.92	1,815.00	1,819.99	166.74	2,065.00	2,069.99	196.55	2,315.00	2,319.99	226.36
1,570.00	1,574.99	137.52	1,820.00	1,824.99	167.33	2,070.00	2,074.99	197.15	2,320.00	2,324.99	226.96
1,575.00	1,579.99	138.12	1,825.00	1,829.99	167.93	2,075.00	2,079.99	197.74	2,325.00	2,329.99	227.55
1,580.00	1,584.99	138.71	1,830.00	1,834.99	168.53	2,080.00	2,084.99	198.34	2,330.00	2,334.99	228.15
1,585.00	1,589.99	139.31	1,835.00	1,839.99	169.12	2,085.00	2,089.99	198.93	2,335.00	2,339.99	228.75
1,590.00	1,594.99	139.91	1,840.00	1,844.99	169.72	2,090.00	2,094.99	199.53	2,340.00	2,344.99	229.34
1,595.00	1,599.99	140.50	1,845.00	1,849.99	170.31	2,095.00	2,099.99	200.13	2,345.00	2,349.99	229.94
1,600.00	1,604.99	141.10	1,850.00	1,854.99	170.91	2,100.00	2,104.99	200.72	2,350.00	2,354.99	230.54
1,605.00	1,609.99	141.69	1,855.00	1,859.99	171.51	2,105.00	2,109.99	201.32	2,355.00	2,359.99	231.13
1,610.00	1,614.99	142.29	1,860.00	1,864.99	172.10	2,110.00	2,114.99	201.92	2,360.00	2,364.99	231.73
1,615.00	1,619.99	142.89	1,865.00	1,869.99	172.70	2,115.00	2,119.99	202.51	2,365.00	2,369.99	232.32
1,620.00	1,624.99	143.48	1,870.00	1,874.99	173.30	2,120.00	2,124.99	203.11	2,370.00	2,374.99	232.92
1,625.00	1,629.99	144.08	1,875.00	1,879.99	173.89	2,125.00	2,129.99	203.70	2,375.00	2,379.99	233.52
1,630.00	1,634.99	144.68	1,880.00	1,884.99	174.49	2,130.00	2,134.99	204.30	2,380.00	2,384.99	234.11
1,635.00	1,639.99	145.27	1,885.00	1,889.99	175.08	2,135.00	2,139.99	204.90	2,385.00	2,389.99	234.71
1,640.00	1,644.99	145.87	1,890.00	1,894.99	175.68	2,140.00	2,144.99	205.49	2,390.00	2,394.99	235.31
1,645.00	1,649.99	146.46	1,895.00	1,899.99	176.28	2,145.00	2,149.99	206.09	2,395.00	2,399.99	235.90

One-month PA table

Actual Contributory Earnings (\$)		Member PA (\$)	Actual Contributory Earnings (\$)		Member PA (\$)	Actual Contributory Earnings (\$)		Member PA (\$)	Actual Contributory Earnings (\$)		Member PA (\$)
2,400.00	2,404.99	236.50	2,650.00	2,654.99	266.31	2,900.00	2,904.99	296.12	3,150.00	3,154.99	325.94
2,405.00	2,409.99	237.09	2,655.00	2,659.99	266.91	2,905.00	2,909.99	296.72	3,155.00	3,159.99	326.53
2,410.00	2,414.99	237.69	2,660.00	2,664.99	267.50	2,910.00	2,914.99	297.32	3,160.00	3,164.99	327.13
2,415.00	2,419.99	238.29	2,665.00	2,669.99	268.10	2,915.00	2,919.99	297.91	3,165.00	3,169.99	327.72
2,420.00	2,424.99	238.88	2,670.00	2,674.99	268.70	2,920.00	2,924.99	298.51	3,170.00	3,174.99	328.32
2,425.00	2,429.99	239.48	2,675.00	2,679.99	269.29	2,925.00	2,929.99	299.10	3,175.00	3,179.99	328.92
2,430.00	2,434.99	240.08	2,680.00	2,684.99	269.89	2,930.00	2,934.99	299.70	3,180.00	3,184.99	329.51
2,435.00	2,439.99	240.67	2,685.00	2,689.99	270.48	2,935.00	2,939.99	300.30	3,185.00	3,189.99	330.11
2,440.00	2,444.99	241.27	2,690.00	2,694.99	271.08	2,940.00	2,944.99	300.89	3,190.00	3,194.99	330.71
2,445.00	2,449.99	241.86	2,695.00	2,699.99	271.68	2,945.00	2,949.99	301.49	3,195.00	3,199.99	331.30
2,450.00	2,454.99	242.46	2,700.00	2,704.99	272.27	2,950.00	2,954.99	302.09	3,200.00	3,204.99	331.90
2,455.00	2,459.99	243.06	2,705.00	2,709.99	272.87	2,955.00	2,959.99	302.68	3,205.00	3,209.99	332.49
2,460.00	2,464.99	243.65	2,710.00	2,714.99	273.47	2,960.00	2,964.99	303.28	3,210.00	3,214.99	333.09
2,465.00	2,469.99	244.25	2,715.00	2,719.99	274.06	2,965.00	2,969.99	303.87	3,215.00	3,219.99	333.69
2,470.00	2,474.99	244.85	2,720.00	2,724.99	274.66	2,970.00	2,974.99	304.47	3,220.00	3,224.99	334.28
2,475.00	2,479.99	245.44	2,725.00	2,729.99	275.25	2,975.00	2,979.99	305.07	3,225.00	3,229.99	334.88
2,480.00	2,484.99	246.04	2,730.00	2,734.99	275.85	2,980.00	2,984.99	305.66	3,230.00	3,234.99	335.48
2,485.00	2,489.99	246.63	2,735.00	2,739.99	276.45	2,985.00	2,989.99	306.26	3,235.00	3,239.99	336.07
2,490.00	2,494.99	247.23	2,740.00	2,744.99	277.04	2,990.00	2,994.99	306.86	3,240.00	3,244.99	336.67
2,495.00	2,499.99	247.83	2,745.00	2,749.99	277.64	2,995.00	2,999.99	307.45	3,245.00	3,249.99	337.26
2,500.00	2,504.99	248.42	2,750.00	2,754.99	278.24	3,000.00	3,004.99	308.05	3,250.00	3,254.99	337.86
2,505.00	2,509.99	249.02	2,755.00	2,759.99	278.83	3,005.00	3,009.99	308.64	3,255.00	3,259.99	338.46
2,510.00	2,514.99	249.62	2,760.00	2,764.99	279.43	3,010.00	3,014.99	309.24	3,260.00	3,264.99	339.05
2,515.00	2,519.99	250.21	2,765.00	2,769.99	280.02	3,015.00	3,019.99	309.84	3,265.00	3,269.99	339.65
2,520.00	2,524.99	250.81	2,770.00	2,774.99	280.62	3,020.00	3,024.99	310.43	3,270.00	3,274.99	340.25
2,525.00	2,529.99	251.40	2,775.00	2,779.99	281.22	3,025.00	3,029.99	311.03	3,275.00	3,279.99	340.84
2,530.00	2,534.99	252.00	2,780.00	2,784.99	281.81	3,030.00	3,034.99	311.63	3,280.00	3,284.99	341.44
2,535.00	2,539.99	252.60	2,785.00	2,789.99	282.41	3,035.00	3,039.99	312.22	3,285.00	3,289.99	342.03
2,540.00	2,544.99	253.19	2,790.00	2,794.99	283.01	3,040.00	3,044.99	312.82	3,290.00	3,294.99	342.63
2,545.00	2,549.99	253.79	2,795.00	2,799.99	283.60	3,045.00	3,049.99	313.41	3,295.00	3,299.99	343.23
2,550.00	2,554.99	254.39	2,800.00	2,804.99	284.20	3,050.00	3,054.99	314.01	3,300.00	3,304.99	343.82
2,555.00	2,559.99	254.98	2,805.00	2,809.99	284.79	3,055.00	3,059.99	314.61	3,305.00	3,309.99	344.42
2,560.00	2,564.99	255.58	2,810.00	2,814.99	285.39	3,060.00	3,064.99	315.20	3,310.00	3,314.99	345.02
2,565.00	2,569.99	256.17	2,815.00	2,819.99	285.99	3,065.00	3,069.99	315.80	3,315.00	3,319.99	345.61
2,570.00	2,574.99	256.77	2,820.00	2,824.99	286.58	3,070.00	3,074.99	316.40	3,320.00	3,324.99	346.21
2,575.00	2,579.99	257.37	2,825.00	2,829.99	287.18	3,075.00	3,079.99	316.99	3,325.00	3,329.99	346.80
2,580.00	2,584.99	257.96	2,830.00	2,834.99	287.78	3,080.00	3,084.99	317.59	3,330.00	3,334.99	347.40
2,585.00	2,589.99	258.56	2,835.00	2,839.99	288.37	3,085.00	3,089.99	318.18	3,335.00	3,339.99	348.00
2,590.00	2,594.99	259.16	2,840.00	2,844.99	288.97	3,090.00	3,094.99	318.78	3,340.00	3,344.99	348.59
2,595.00	2,599.99	259.75	2,845.00	2,849.99	289.56	3,095.00	3,099.99	319.38	3,345.00	3,349.99	349.19
2,600.00	2,604.99	260.35	2,850.00	2,854.99	290.16	3,100.00	3,104.99	319.97	3,350.00	3,354.99	349.79
2,605.00	2,609.99	260.94	2,855.00	2,859.99	290.76	3,105.00	3,109.99	320.57	3,355.00	3,359.99	350.38
2,610.00	2,614.99	261.54	2,860.00	2,864.99	291.35	3,110.00	3,114.99	321.17	3,360.00	3,364.99	350.98
2,615.00	2,619.99	262.14	2,865.00	2,869.99	291.95	3,115.00	3,119.99	321.76	3,365.00	3,369.99	351.57
2,620.00	2,624.99	262.73	2,870.00	2,874.99	292.55	3,120.00	3,124.99	322.36	3,370.00	3,374.99	352.17
2,625.00	2,629.99	263.33	2,875.00	2,879.99	293.14	3,125.00	3,129.99	322.95	3,375.00	3,379.99	352.76
2,630.00	2,634.99	263.93	2,880.00	2,884.99	293.74	3,130.00	3,134.99	323.55	3,380.00	3,384.99	353.36
2,635.00	2,639.99	264.52	2,885.00	2,889.99	294.33	3,135.00	3,139.99	324.15	3,385.00	3,389.99	353.95
2,640.00	2,644.99	265.12	2,890.00	2,894.99	294.93	3,140.00	3,144.99	324.74	3,390.00	3,394.99	354.55
2,645.00	2,649.99	265.71	2,895.00	2,899.99	295.53	3,145.00	3,149.99	325.34	3,395.00	3,399.99	355.14

One-month PA table

Actual Contributory Earnings (\$)		Member PA (\$)	Actual Contributory Earnings (\$)		Member PA (\$)	Actual Contributory Earnings (\$)		Member PA (\$)	Actual Contributory Earnings (\$)		Member PA (\$)
3,400.00	3,404.99	357.42	3,650.00	3,654.99	402.42	3,900.00	3,904.99	447.42	4,150.00	4,154.99	492.42
3,405.00	3,409.99	358.32	3,655.00	3,659.99	403.32	3,905.00	3,909.99	448.32	4,155.00	4,159.99	493.32
3,410.00	3,414.99	359.22	3,660.00	3,664.99	404.22	3,910.00	3,914.99	449.22	4,160.00	4,164.99	494.22
3,415.00	3,419.99	360.12	3,665.00	3,669.99	405.12	3,915.00	3,919.99	450.12	4,165.00	4,169.99	495.12
3,420.00	3,424.99	361.02	3,670.00	3,674.99	406.02	3,920.00	3,924.99	451.02	4,170.00	4,174.99	496.02
3,425.00	3,429.99	361.92	3,675.00	3,679.99	406.92	3,925.00	3,929.99	451.92	4,175.00	4,179.99	496.92
3,430.00	3,434.99	362.82	3,680.00	3,684.99	407.82	3,930.00	3,934.99	452.82	4,180.00	4,184.99	497.82
3,435.00	3,439.99	363.72	3,685.00	3,689.99	408.72	3,935.00	3,939.99	453.72	4,185.00	4,189.99	498.72
3,440.00	3,444.99	364.62	3,690.00	3,694.99	409.62	3,940.00	3,944.99	454.62	4,190.00	4,194.99	499.62
3,445.00	3,449.99	365.52	3,695.00	3,699.99	410.52	3,945.00	3,949.99	455.52	4,195.00	4,199.99	500.52
3,450.00	3,454.99	366.42	3,700.00	3,704.99	411.42	3,950.00	3,954.99	456.42	4,200.00	4,204.99	501.42
3,455.00	3,459.99	367.32	3,705.00	3,709.99	412.32	3,955.00	3,959.99	457.32	4,205.00	4,209.99	502.32
3,460.00	3,464.99	368.22	3,710.00	3,714.99	413.22	3,960.00	3,964.99	458.22	4,210.00	4,214.99	503.22
3,465.00	3,469.99	369.12	3,715.00	3,719.99	414.12	3,965.00	3,969.99	459.12	4,215.00	4,219.99	504.12
3,470.00	3,474.99	370.02	3,720.00	3,724.99	415.02	3,970.00	3,974.99	460.02	4,220.00	4,224.99	505.02
3,475.00	3,479.99	370.92	3,725.00	3,729.99	415.92	3,975.00	3,979.99	460.92	4,225.00	4,229.99	505.92
3,480.00	3,484.99	371.82	3,730.00	3,734.99	416.82	3,980.00	3,984.99	461.82	4,230.00	4,234.99	506.82
3,485.00	3,489.99	372.72	3,735.00	3,739.99	417.72	3,985.00	3,989.99	462.72	4,235.00	4,239.99	507.72
3,490.00	3,494.99	373.62	3,740.00	3,744.99	418.62	3,990.00	3,994.99	463.62	4,240.00	4,244.99	508.62
3,495.00	3,499.99	374.52	3,745.00	3,749.99	419.52	3,995.00	3,999.99	464.52	4,245.00	4,249.99	509.52
3,500.00	3,504.99	375.42	3,750.00	3,754.99	420.42	4,000.00	4,004.99	465.42	4,250.00	4,254.99	510.42
3,505.00	3,509.99	376.32	3,755.00	3,759.99	421.32	4,005.00	4,009.99	466.32	4,255.00	4,259.99	511.32
3,510.00	3,514.99	377.22	3,760.00	3,764.99	422.22	4,010.00	4,014.99	467.22	4,260.00	4,264.99	512.22
3,515.00	3,519.99	378.12	3,765.00	3,769.99	423.12	4,015.00	4,019.99	468.12	4,265.00	4,269.99	513.12
3,520.00	3,524.99	379.02	3,770.00	3,774.99	424.02	4,020.00	4,024.99	469.02	4,270.00	4,274.99	514.02
3,525.00	3,529.99	379.92	3,775.00	3,779.99	424.92	4,025.00	4,029.99	469.92	4,275.00	4,279.99	514.92
3,530.00	3,534.99	380.82	3,780.00	3,784.99	425.82	4,030.00	4,034.99	470.82	4,280.00	4,284.99	515.82
3,535.00	3,539.99	381.72	3,785.00	3,789.99	426.72	4,035.00	4,039.99	471.72	4,285.00	4,289.99	516.72
3,540.00	3,544.99	382.62	3,790.00	3,794.99	427.62	4,040.00	4,044.99	472.62	4,290.00	4,294.99	517.62
3,545.00	3,549.99	383.52	3,795.00	3,799.99	428.52	4,045.00	4,049.99	473.52	4,295.00	4,299.99	518.52
3,550.00	3,554.99	384.42	3,800.00	3,804.99	429.42	4,050.00	4,054.99	474.42	4,300.00	4,304.99	519.42
3,555.00	3,559.99	385.32	3,805.00	3,809.99	430.32	4,055.00	4,059.99	475.32	4,305.00	4,309.99	520.32
3,560.00	3,564.99	386.22	3,810.00	3,814.99	431.22	4,060.00	4,064.99	476.22	4,310.00	4,314.99	521.22
3,565.00	3,569.99	387.12	3,815.00	3,819.99	432.12	4,065.00	4,069.99	477.12	4,315.00	4,319.99	522.12
3,570.00	3,574.99	388.02	3,820.00	3,824.99	433.02	4,070.00	4,074.99	478.02	4,320.00	4,324.99	523.02
3,575.00	3,579.99	388.92	3,825.00	3,829.99	433.92	4,075.00	4,079.99	478.92	4,325.00	4,329.99	523.92
3,580.00	3,584.99	389.82	3,830.00	3,834.99	434.82	4,080.00	4,084.99	479.82	4,330.00	4,334.99	524.82
3,585.00	3,589.99	390.72	3,835.00	3,839.99	435.72	4,085.00	4,089.99	480.72	4,335.00	4,339.99	525.72
3,590.00	3,594.99	391.62	3,840.00	3,844.99	436.62	4,090.00	4,094.99	481.62	4,340.00	4,344.99	526.62
3,595.00	3,599.99	392.52	3,845.00	3,849.99	437.52	4,095.00	4,099.99	482.52	4,345.00	4,349.99	527.52
3,600.00	3,604.99	393.42	3,850.00	3,854.99	438.42	4,100.00	4,104.99	483.42	4,350.00	4,354.99	528.42
3,605.00	3,609.99	394.32	3,855.00	3,859.99	439.32	4,105.00	4,109.99	484.32	4,355.00	4,359.99	529.32
3,610.00	3,614.99	395.22	3,860.00	3,864.99	440.22	4,110.00	4,114.99	485.22	4,360.00	4,364.99	530.22
3,615.00	3,619.99	396.12	3,865.00	3,869.99	441.12	4,115.00	4,119.99	486.12	4,365.00	4,369.99	531.12
3,620.00	3,624.99	397.02	3,870.00	3,874.99	442.02	4,120.00	4,124.99	487.02	4,370.00	4,374.99	532.02
3,625.00	3,629.99	397.92	3,875.00	3,879.99	442.92	4,125.00	4,129.99	487.92	4,375.00	4,379.99	532.92
3,630.00	3,634.99	398.82	3,880.00	3,884.99	443.82	4,130.00	4,134.99	488.82	4,380.00	4,384.99	533.82
3,635.00	3,639.99	399.72	3,885.00	3,889.99	444.72	4,135.00	4,139.99	489.72	4,385.00	4,389.99	534.72
3,640.00	3,644.99	400.62	3,890.00	3,894.99	445.62	4,140.00	4,144.99	490.62	4,390.00	4,394.99	535.62
3,645.00	3,649.99	401.52	3,895.00	3,899.99	446.52	4,145.00	4,149.99	491.52	4,395.00	4,399.99	536.52

One-month PA table

Actual Contributory Earnings (\$)		Member PA (\$)	Actual Contributory Earnings (\$)		Member PA (\$)	Actual Contributory Earnings (\$)		Member PA (\$)	Actual Contributory Earnings (\$)		Member PA (\$)
4,400.00	4,404.99	537.42	4,650.00	4,654.99	582.42	4,900.00	4,904.99	627.42	5,150.00	5,154.99	672.42
4,405.00	4,409.99	538.32	4,655.00	4,659.99	583.32	4,905.00	4,909.99	628.32	5,155.00	5,159.99	673.32
4,410.00	4,414.99	539.22	4,660.00	4,664.99	584.22	4,910.00	4,914.99	629.22	5,160.00	5,164.99	674.22
4,415.00	4,419.99	540.12	4,665.00	4,669.99	585.12	4,915.00	4,919.99	630.12	5,165.00	5,169.99	675.12
4,420.00	4,424.99	541.02	4,670.00	4,674.99	586.02	4,920.00	4,924.99	631.02	5,170.00	5,174.99	676.02
4,425.00	4,429.99	541.92	4,675.00	4,679.99	586.92	4,925.00	4,929.99	631.92	5,175.00	5,179.99	676.92
4,430.00	4,434.99	542.82	4,680.00	4,684.99	587.82	4,930.00	4,934.99	632.82	5,180.00	5,184.99	677.82
4,435.00	4,439.99	543.72	4,685.00	4,689.99	588.72	4,935.00	4,939.99	633.72	5,185.00	5,189.99	678.72
4,440.00	4,444.99	544.62	4,690.00	4,694.99	589.62	4,940.00	4,944.99	634.62	5,190.00	5,194.99	679.62
4,445.00	4,449.99	545.52	4,695.00	4,699.99	590.52	4,945.00	4,949.99	635.52	5,195.00	5,199.99	680.52
4,450.00	4,454.99	546.42	4,700.00	4,704.99	591.42	4,950.00	4,954.99	636.42	5,200.00	5,204.99	681.42
4,455.00	4,459.99	547.32	4,705.00	4,709.99	592.32	4,955.00	4,959.99	637.32	5,205.00	5,209.99	682.32
4,460.00	4,464.99	548.22	4,710.00	4,714.99	593.22	4,960.00	4,964.99	638.22	5,210.00	5,214.99	683.22
4,465.00	4,469.99	549.12	4,715.00	4,719.99	594.12	4,965.00	4,969.99	639.12	5,215.00	5,219.99	684.12
4,470.00	4,474.99	550.02	4,720.00	4,724.99	595.02	4,970.00	4,974.99	640.02	5,220.00	5,224.99	685.02
4,475.00	4,479.99	550.92	4,725.00	4,729.99	595.92	4,975.00	4,979.99	640.92	5,225.00	5,229.99	685.92
4,480.00	4,484.99	551.82	4,730.00	4,734.99	596.82	4,980.00	4,984.99	641.82	5,230.00	5,234.99	686.82
4,485.00	4,489.99	552.72	4,735.00	4,739.99	597.72	4,985.00	4,989.99	642.72	5,235.00	5,239.99	687.72
4,490.00	4,494.99	553.62	4,740.00	4,744.99	598.62	4,990.00	4,994.99	643.62	5,240.00	5,244.99	688.62
4,495.00	4,499.99	554.52	4,745.00	4,749.99	599.52	4,995.00	4,999.99	644.52	5,245.00	5,249.99	689.52
4,500.00	4,504.99	555.42	4,750.00	4,754.99	600.42	5,000.00	5,004.99	645.42	5,250.00	5,254.99	690.42
4,505.00	4,509.99	556.32	4,755.00	4,759.99	601.32	5,005.00	5,009.99	646.32	5,255.00	5,259.99	691.32
4,510.00	4,514.99	557.22	4,760.00	4,764.99	602.22	5,010.00	5,014.99	647.22	5,260.00	5,264.99	692.22
4,515.00	4,519.99	558.12	4,765.00	4,769.99	603.12	5,015.00	5,019.99	648.12	5,265.00	5,269.99	693.12
4,520.00	4,524.99	559.02	4,770.00	4,774.99	604.02	5,020.00	5,024.99	649.02	5,270.00	5,274.99	694.02
4,525.00	4,529.99	559.92	4,775.00	4,779.99	604.92	5,025.00	5,029.99	649.92	5,275.00	5,279.99	694.92
4,530.00	4,534.99	560.82	4,780.00	4,784.99	605.82	5,030.00	5,034.99	650.82	5,280.00	5,284.99	695.82
4,535.00	4,539.99	561.72	4,785.00	4,789.99	606.72	5,035.00	5,039.99	651.72	5,285.00	5,289.99	696.72
4,540.00	4,544.99	562.62	4,790.00	4,794.99	607.62	5,040.00	5,044.99	652.62	5,290.00	5,294.99	697.62
4,545.00	4,549.99	563.52	4,795.00	4,799.99	608.52	5,045.00	5,049.99	653.52	5,295.00	5,299.99	698.52
4,550.00	4,554.99	564.42	4,800.00	4,804.99	609.42	5,050.00	5,054.99	654.42	5,300.00	5,304.99	699.42
4,555.00	4,559.99	565.32	4,805.00	4,809.99	610.32	5,055.00	5,059.99	655.32	5,305.00	5,309.99	700.32
4,560.00	4,564.99	566.22	4,810.00	4,814.99	611.22	5,060.00	5,064.99	656.22	5,310.00	5,314.99	701.22
4,565.00	4,569.99	567.12	4,815.00	4,819.99	612.12	5,065.00	5,069.99	657.12	5,315.00	5,319.99	702.12
4,570.00	4,574.99	568.02	4,820.00	4,824.99	613.02	5,070.00	5,074.99	658.02	5,320.00	5,324.99	703.02
4,575.00	4,579.99	568.92	4,825.00	4,829.99	613.92	5,075.00	5,079.99	658.92	5,325.00	5,329.99	703.92
4,580.00	4,584.99	569.82	4,830.00	4,834.99	614.82	5,080.00	5,084.99	659.82	5,330.00	5,334.99	704.82
4,585.00	4,589.99	570.72	4,835.00	4,839.99	615.72	5,085.00	5,089.99	660.72	5,335.00	5,339.99	705.72
4,590.00	4,594.99	571.62	4,840.00	4,844.99	616.62	5,090.00	5,094.99	661.62	5,340.00	5,344.99	706.62
4,595.00	4,599.99	572.52	4,845.00	4,849.99	617.52	5,095.00	5,099.99	662.52	5,345.00	5,349.99	707.52
4,600.00	4,604.99	573.42	4,850.00	4,854.99	618.42	5,100.00	5,104.99	663.42	5,350.00	5,354.99	708.42
4,605.00	4,609.99	574.32	4,855.00	4,859.99	619.32	5,105.00	5,109.99	664.32	5,355.00	5,359.99	709.32
4,610.00	4,614.99	575.22	4,860.00	4,864.99	620.22	5,110.00	5,114.99	665.22	5,360.00	5,364.99	710.22
4,615.00	4,619.99	576.12	4,865.00	4,869.99	621.12	5,115.00	5,119.99	666.12	5,365.00	5,369.99	711.12
4,620.00	4,624.99	577.02	4,870.00	4,874.99	622.02	5,120.00	5,124.99	667.02	5,370.00	5,374.99	712.02
4,625.00	4,629.99	577.92	4,875.00	4,879.99	622.92	5,125.00	5,129.99	667.92	5,375.00	5,379.99	712.92
4,630.00	4,634.99	578.82	4,880.00	4,884.99	623.82	5,130.00	5,134.99	668.82	5,380.00	5,384.99	713.82
4,635.00	4,639.99	579.72	4,885.00	4,889.99	624.72	5,135.00	5,139.99	669.72	5,385.00	5,389.99	714.72
4,640.00	4,644.99	580.62	4,890.00	4,894.99	625.62	5,140.00	5,144.99	670.62	5,390.00	5,394.99	715.62
4,645.00	4,649.99	581.52	4,895.00	4,899.99	626.52	5,145.00	5,149.99	671.52	5,395.00	5,399.99	716.52

One-month PA table

Actual Contributory Earnings (\$)		Member PA (\$)	Actual Contributory Earnings (\$)		Member PA (\$)	Actual Contributory Earnings (\$)		Member PA (\$)	Actual Contributory Earnings (\$)		Member PA (\$)
5,400.00	5,404.99	717.42	5,650.00	5,654.99	762.42	5,900.00	5,904.99	807.42	6,150.00	6,154.99	852.42
5,405.00	5,409.99	718.32	5,655.00	5,659.99	763.32	5,905.00	5,909.99	808.32	6,155.00	6,159.99	853.32
5,410.00	5,414.99	719.22	5,660.00	5,664.99	764.22	5,910.00	5,914.99	809.22	6,160.00	6,164.99	854.22
5,415.00	5,419.99	720.12	5,665.00	5,669.99	765.12	5,915.00	5,919.99	810.12	6,165.00	6,169.99	855.12
5,420.00	5,424.99	721.02	5,670.00	5,674.99	766.02	5,920.00	5,924.99	811.02	6,170.00	6,174.99	856.02
5,425.00	5,429.99	721.92	5,675.00	5,679.99	766.92	5,925.00	5,929.99	811.92	6,175.00	6,179.99	856.92
5,430.00	5,434.99	722.82	5,680.00	5,684.99	767.82	5,930.00	5,934.99	812.82	6,180.00	6,184.99	857.82
5,435.00	5,439.99	723.72	5,685.00	5,689.99	768.72	5,935.00	5,939.99	813.72	6,185.00	6,189.99	858.72
5,440.00	5,444.99	724.62	5,690.00	5,694.99	769.62	5,940.00	5,944.99	814.62	6,190.00	6,194.99	859.62
5,445.00	5,449.99	725.52	5,695.00	5,699.99	770.52	5,945.00	5,949.99	815.52	6,195.00	6,199.99	860.52
5,450.00	5,454.99	726.42	5,700.00	5,704.99	771.42	5,950.00	5,954.99	816.42	6,200.00	6,204.99	861.42
5,455.00	5,459.99	727.32	5,705.00	5,709.99	772.32	5,955.00	5,959.99	817.32	6,205.00	6,209.99	862.32
5,460.00	5,464.99	728.22	5,710.00	5,714.99	773.22	5,960.00	5,964.99	818.22	6,210.00	6,214.99	863.22
5,465.00	5,469.99	729.12	5,715.00	5,719.99	774.12	5,965.00	5,969.99	819.12	6,215.00	6,219.99	864.12
5,470.00	5,474.99	730.02	5,720.00	5,724.99	775.02	5,970.00	5,974.99	820.02	6,220.00	6,224.99	865.02
5,475.00	5,479.99	730.92	5,725.00	5,729.99	775.92	5,975.00	5,979.99	820.92	6,225.00	6,229.99	865.92
5,480.00	5,484.99	731.82	5,730.00	5,734.99	776.82	5,980.00	5,984.99	821.82	6,230.00	6,234.99	866.82
5,485.00	5,489.99	732.72	5,735.00	5,739.99	777.72	5,985.00	5,989.99	822.72	6,235.00	6,239.99	867.72
5,490.00	5,494.99	733.62	5,740.00	5,744.99	778.62	5,990.00	5,994.99	823.62	6,240.00	6,244.99	868.62
5,495.00	5,499.99	734.52	5,745.00	5,749.99	779.52	5,995.00	5,999.99	824.52	6,245.00	6,249.99	869.52
5,500.00	5,504.99	735.42	5,750.00	5,754.99	780.42	6,000.00	6,004.99	825.42	6,250.00	6,254.99	870.42
5,505.00	5,509.99	736.32	5,755.00	5,759.99	781.32	6,005.00	6,009.99	826.32	6,255.00	6,259.99	871.32
5,510.00	5,514.99	737.22	5,760.00	5,764.99	782.22	6,010.00	6,014.99	827.22	6,260.00	6,264.99	872.22
5,515.00	5,519.99	738.12	5,765.00	5,769.99	783.12	6,015.00	6,019.99	828.12	6,265.00	6,269.99	873.12
5,520.00	5,524.99	739.02	5,770.00	5,774.99	784.02	6,020.00	6,024.99	829.02	6,270.00	6,274.99	874.02
5,525.00	5,529.99	739.92	5,775.00	5,779.99	784.92	6,025.00	6,029.99	829.92	6,275.00	6,279.99	874.92
5,530.00	5,534.99	740.82	5,780.00	5,784.99	785.82	6,030.00	6,034.99	830.82	6,280.00	6,284.99	875.82
5,535.00	5,539.99	741.72	5,785.00	5,789.99	786.72	6,035.00	6,039.99	831.72	6,285.00	6,289.99	876.72
5,540.00	5,544.99	742.62	5,790.00	5,794.99	787.62	6,040.00	6,044.99	832.62	6,290.00	6,294.99	877.62
5,545.00	5,549.99	743.52	5,795.00	5,799.99	788.52	6,045.00	6,049.99	833.52	6,295.00	6,299.99	878.52
5,550.00	5,554.99	744.42	5,800.00	5,804.99	789.42	6,050.00	6,054.99	834.42	6,300.00	6,304.99	879.42
5,555.00	5,559.99	745.32	5,805.00	5,809.99	790.32	6,055.00	6,059.99	835.32	6,305.00	6,309.99	880.32
5,560.00	5,564.99	746.22	5,810.00	5,814.99	791.22	6,060.00	6,064.99	836.22	6,310.00	6,314.99	881.22
5,565.00	5,569.99	747.12	5,815.00	5,819.99	792.12	6,065.00	6,069.99	837.12	6,315.00	6,319.99	882.12
5,570.00	5,574.99	748.02	5,820.00	5,824.99	793.02	6,070.00	6,074.99	838.02	6,320.00	6,324.99	883.02
5,575.00	5,579.99	748.92	5,825.00	5,829.99	793.92	6,075.00	6,079.99	838.92	6,325.00	6,329.99	883.92
5,580.00	5,584.99	749.82	5,830.00	5,834.99	794.82	6,080.00	6,084.99	839.82	6,330.00	6,334.99	884.82
5,585.00	5,589.99	750.72	5,835.00	5,839.99	795.72	6,085.00	6,089.99	840.72	6,335.00	6,339.99	885.72
5,590.00	5,594.99	751.62	5,840.00	5,844.99	796.62	6,090.00	6,094.99	841.62	6,340.00	6,344.99	886.62
5,595.00	5,599.99	752.52	5,845.00	5,849.99	797.52	6,095.00	6,099.99	842.52	6,345.00	6,349.99	887.52
5,600.00	5,604.99	753.42	5,850.00	5,854.99	798.42	6,100.00	6,104.99	843.42	6,350.00	6,354.99	888.42
5,605.00	5,609.99	754.32	5,855.00	5,859.99	799.32	6,105.00	6,109.99	844.32	6,355.00	6,359.99	889.32
5,610.00	5,614.99	755.22	5,860.00	5,864.99	800.22	6,110.00	6,114.99	845.22	6,360.00	6,364.99	890.22
5,615.00	5,619.99	756.12	5,865.00	5,869.99	801.12	6,115.00	6,119.99	846.12	6,365.00	6,369.99	891.12
5,620.00	5,624.99	757.02	5,870.00	5,874.99	802.02	6,120.00	6,124.99	847.02	6,370.00	6,374.99	892.02
5,625.00	5,629.99	757.92	5,875.00	5,879.99	802.92	6,125.00	6,129.99	847.92	6,375.00	6,379.99	892.92
5,630.00	5,634.99	758.82	5,880.00	5,884.99	803.82	6,130.00	6,134.99	848.82	6,380.00	6,384.99	893.82
5,635.00	5,639.99	759.72	5,885.00	5,889.99	804.72	6,135.00	6,139.99	849.72	6,385.00	6,389.99	894.72
5,640.00	5,644.99	760.62	5,890.00	5,894.99	805.62	6,140.00	6,144.99	850.62	6,390.00	6,394.99	895.62
5,645.00	5,649.99	761.52	5,895.00	5,899.99	806.52	6,145.00	6,149.99	851.52	6,395.00	6,399.99	896.52

One-month PA table

Actual Contributory Earnings (\$)		Member PA (\$)	Actual Contributory Earnings (\$)		Member PA (\$)	Actual Contributory Earnings (\$)		Member PA (\$)	Actual Contributory Earnings (\$)		Member PA (\$)
6,400.00	6,404.99	897.42	6,650.00	6,654.99	942.42	6,900.00	6,904.99	987.42	7,150.00	7,154.99	1,032.42
6,405.00	6,409.99	898.32	6,655.00	6,659.99	943.32	6,905.00	6,909.99	988.32	7,155.00	7,159.99	1,033.32
6,410.00	6,414.99	899.22	6,660.00	6,664.99	944.22	6,910.00	6,914.99	989.22	7,160.00	7,164.99	1,034.22
6,415.00	6,419.99	900.12	6,665.00	6,669.99	945.12	6,915.00	6,919.99	990.12	7,165.00	7,169.99	1,035.12
6,420.00	6,424.99	901.02	6,670.00	6,674.99	946.02	6,920.00	6,924.99	991.02	7,170.00	7,174.99	1,036.02
6,425.00	6,429.99	901.92	6,675.00	6,679.99	946.92	6,925.00	6,929.99	991.92	7,175.00	7,179.99	1,036.92
6,430.00	6,434.99	902.82	6,680.00	6,684.99	947.82	6,930.00	6,934.99	992.82	7,180.00	7,184.99	1,037.82
6,435.00	6,439.99	903.72	6,685.00	6,689.99	948.72	6,935.00	6,939.99	993.72	7,185.00	7,189.99	1,038.72
6,440.00	6,444.99	904.62	6,690.00	6,694.99	949.62	6,940.00	6,944.99	994.62	7,190.00	7,194.99	1,039.62
6,445.00	6,449.99	905.52	6,695.00	6,699.99	950.52	6,945.00	6,949.99	995.52	7,195.00	7,199.99	1,040.52
6,450.00	6,454.99	906.42	6,700.00	6,704.99	951.42	6,950.00	6,954.99	996.42	7,200.00	7,204.99	1,041.42
6,455.00	6,459.99	907.32	6,705.00	6,709.99	952.32	6,955.00	6,959.99	997.32	7,205.00	7,209.99	1,042.32
6,460.00	6,464.99	908.22	6,710.00	6,714.99	953.22	6,960.00	6,964.99	998.22	7,210.00	7,214.99	1,043.22
6,465.00	6,469.99	909.12	6,715.00	6,719.99	954.12	6,965.00	6,969.99	999.12	7,215.00	7,219.99	1,044.12
6,470.00	6,474.99	910.02	6,720.00	6,724.99	955.02	6,970.00	6,974.99	1,000.02	7,220.00	7,224.99	1,045.02
6,475.00	6,479.99	910.92	6,725.00	6,729.99	955.92	6,975.00	6,979.99	1,000.92	7,225.00	7,229.99	1,045.92
6,480.00	6,484.99	911.82	6,730.00	6,734.99	956.82	6,980.00	6,984.99	1,001.82	7,230.00	7,234.99	1,046.82
6,485.00	6,489.99	912.72	6,735.00	6,739.99	957.72	6,985.00	6,989.99	1,002.72	7,235.00	7,239.99	1,047.72
6,490.00	6,494.99	913.62	6,740.00	6,744.99	958.62	6,990.00	6,994.99	1,003.62	7,240.00	7,244.99	1,048.62
6,495.00	6,499.99	914.52	6,745.00	6,749.99	959.52	6,995.00	6,999.99	1,004.52	7,245.00	7,249.99	1,049.52
6,500.00	6,504.99	915.42	6,750.00	6,754.99	960.42	7,000.00	7,004.99	1,005.42	7,250.00	7,254.99	1,050.42
6,505.00	6,509.99	916.32	6,755.00	6,759.99	961.32	7,005.00	7,009.99	1,006.32	7,255.00	7,259.99	1,051.32
6,510.00	6,514.99	917.22	6,760.00	6,764.99	962.22	7,010.00	7,014.99	1,007.22	7,260.00	7,264.99	1,052.22
6,515.00	6,519.99	918.12	6,765.00	6,769.99	963.12	7,015.00	7,019.99	1,008.12	7,265.00	7,269.99	1,053.12
6,520.00	6,524.99	919.02	6,770.00	6,774.99	964.02	7,020.00	7,024.99	1,009.02	7,270.00	7,274.99	1,054.02
6,525.00	6,529.99	919.92	6,775.00	6,779.99	964.92	7,025.00	7,029.99	1,009.92	7,275.00	7,279.99	1,054.92
6,530.00	6,534.99	920.82	6,780.00	6,784.99	965.82	7,030.00	7,034.99	1,010.82	7,280.00	7,284.99	1,055.82
6,535.00	6,539.99	921.72	6,785.00	6,789.99	966.72	7,035.00	7,039.99	1,011.72	7,285.00	7,289.99	1,056.72
6,540.00	6,544.99	922.62	6,790.00	6,794.99	967.62	7,040.00	7,044.99	1,012.62	7,290.00	7,294.99	1,057.62
6,545.00	6,549.99	923.52	6,795.00	6,799.99	968.52	7,045.00	7,049.99	1,013.52	7,295.00	7,299.99	1,058.52
6,550.00	6,554.99	924.42	6,800.00	6,804.99	969.42	7,050.00	7,054.99	1,014.42	7,300.00	7,304.99	1,059.42
6,555.00	6,559.99	925.32	6,805.00	6,809.99	970.32	7,055.00	7,059.99	1,015.32	7,305.00	7,309.99	1,060.32
6,560.00	6,564.99	926.22	6,810.00	6,814.99	971.22	7,060.00	7,064.99	1,016.22	7,310.00	7,314.99	1,061.22
6,565.00	6,569.99	927.12	6,815.00	6,819.99	972.12	7,065.00	7,069.99	1,017.12	7,315.00	7,319.99	1,062.12
6,570.00	6,574.99	928.02	6,820.00	6,824.99	973.02	7,070.00	7,074.99	1,018.02	7,320.00	7,324.99	1,063.02
6,575.00	6,579.99	928.92	6,825.00	6,829.99	973.92	7,075.00	7,079.99	1,018.92	7,325.00	7,329.99	1,063.92
6,580.00	6,584.99	929.82	6,830.00	6,834.99	974.82	7,080.00	7,084.99	1,019.82	7,330.00	7,334.99	1,064.82
6,585.00	6,589.99	930.72	6,835.00	6,839.99	975.72	7,085.00	7,089.99	1,020.72	7,335.00	7,339.99	1,065.72
6,590.00	6,594.99	931.62	6,840.00	6,844.99	976.62	7,090.00	7,094.99	1,021.62	7,340.00	7,344.99	1,066.62
6,595.00	6,599.99	932.52	6,845.00	6,849.99	977.52	7,095.00	7,099.99	1,022.52	7,345.00	7,349.99	1,067.52
6,600.00	6,604.99	933.42	6,850.00	6,854.99	978.42	7,100.00	7,104.99	1,023.42	7,350.00	7,354.99	1,068.42
6,605.00	6,609.99	934.32	6,855.00	6,859.99	979.32	7,105.00	7,109.99	1,024.32	7,355.00	7,359.99	1,069.32
6,610.00	6,614.99	935.22	6,860.00	6,864.99	980.22	7,110.00	7,114.99	1,025.22	7,360.00	7,364.99	1,070.22
6,615.00	6,619.99	936.12	6,865.00	6,869.99	981.12	7,115.00	7,119.99	1,026.12	7,365.00	7,369.99	1,071.12
6,620.00	6,624.99	937.02	6,870.00	6,874.99	982.02	7,120.00	7,124.99	1,027.02	7,370.00	7,374.99	1,072.02
6,625.00	6,629.99	937.92	6,875.00	6,879.99	982.92	7,125.00	7,129.99	1,027.92	7,375.00	7,379.99	1,072.92
6,630.00	6,634.99	938.82	6,880.00	6,884.99	983.82	7,130.00	7,134.99	1,028.82	7,380.00	7,384.99	1,073.82
6,635.00	6,639.99	939.72	6,885.00	6,889.99	984.72	7,135.00	7,139.99	1,029.72	7,385.00	7,389.99	1,074.72
6,640.00	6,644.99	940.62	6,890.00	6,894.99	985.62	7,140.00	7,144.99	1,030.62	7,390.00	7,394.99	1,075.62
6,645.00	6,649.99	941.52	6,895.00	6,899.99	986.52	7,145.00	7,149.99	1,031.52	7,395.00	7,399.99	1,076.52

One-month PA table

Actual Contributory Earnings (\$)		Member PA (\$)	Actual Contributory Earnings (\$)		Member PA (\$)	Actual Contributory Earnings (\$)		Member PA (\$)	Actual Contributory Earnings (\$)		Member PA (\$)
7,400.00	7,404.99	1,077.42	7,650.00	7,654.99	1,122.42	7,900.00	7,904.99	1,167.42	8,150.00	8,154.99	1,212.42
7,405.00	7,409.99	1,078.32	7,655.00	7,659.99	1,123.32	7,905.00	7,909.99	1,168.32	8,155.00	8,159.99	1,213.32
7,410.00	7,414.99	1,079.22	7,660.00	7,664.99	1,124.22	7,910.00	7,914.99	1,169.22	8,160.00	8,164.99	1,214.22
7,415.00	7,419.99	1,080.12	7,665.00	7,669.99	1,125.12	7,915.00	7,919.99	1,170.12	8,165.00	8,169.99	1,215.12
7,420.00	7,424.99	1,081.02	7,670.00	7,674.99	1,126.02	7,920.00	7,924.99	1,171.02	8,170.00	8,174.99	1,216.02
7,425.00	7,429.99	1,081.92	7,675.00	7,679.99	1,126.92	7,925.00	7,929.99	1,171.92	8,175.00	8,179.99	1,216.92
7,430.00	7,434.99	1,082.82	7,680.00	7,684.99	1,127.82	7,930.00	7,934.99	1,172.82	8,180.00	8,184.99	1,217.82
7,435.00	7,439.99	1,083.72	7,685.00	7,689.99	1,128.72	7,935.00	7,939.99	1,173.72	8,185.00	8,189.99	1,218.72
7,440.00	7,444.99	1,084.62	7,690.00	7,694.99	1,129.62	7,940.00	7,944.99	1,174.62	8,190.00	8,194.99	1,219.62
7,445.00	7,449.99	1,085.52	7,695.00	7,699.99	1,130.52	7,945.00	7,949.99	1,175.52	8,195.00	8,199.99	1,220.52
7,450.00	7,454.99	1,086.42	7,700.00	7,704.99	1,131.42	7,950.00	7,954.99	1,176.42	8,200.00	8,204.99	1,221.42
7,455.00	7,459.99	1,087.32	7,705.00	7,709.99	1,132.32	7,955.00	7,959.99	1,177.32	8,205.00	8,209.99	1,222.32
7,460.00	7,464.99	1,088.22	7,710.00	7,714.99	1,133.22	7,960.00	7,964.99	1,178.22	8,210.00	8,214.99	1,223.22
7,465.00	7,469.99	1,089.12	7,715.00	7,719.99	1,134.12	7,965.00	7,969.99	1,179.12	8,215.00	8,219.99	1,224.12
7,470.00	7,474.99	1,090.02	7,720.00	7,724.99	1,135.02	7,970.00	7,974.99	1,180.02	8,220.00	8,224.99	1,225.02
7,475.00	7,479.99	1,090.92	7,725.00	7,729.99	1,135.92	7,975.00	7,979.99	1,180.92	8,225.00	8,229.99	1,225.92
7,480.00	7,484.99	1,091.82	7,730.00	7,734.99	1,136.82	7,980.00	7,984.99	1,181.82	8,230.00	8,234.99	1,226.82
7,485.00	7,489.99	1,092.72	7,735.00	7,739.99	1,137.72	7,985.00	7,989.99	1,182.72	8,235.00	8,239.99	1,227.72
7,490.00	7,494.99	1,093.62	7,740.00	7,744.99	1,138.62	7,990.00	7,994.99	1,183.62	8,240.00	8,244.99	1,228.62
7,495.00	7,499.99	1,094.52	7,745.00	7,749.99	1,139.52	7,995.00	7,999.99	1,184.52	8,245.00	8,249.99	1,229.52
7,500.00	7,504.99	1,095.42	7,750.00	7,754.99	1,140.42	8,000.00	8,004.99	1,185.42	8,250.00	8,254.99	1,230.42
7,505.00	7,509.99	1,096.32	7,755.00	7,759.99	1,141.32	8,005.00	8,009.99	1,186.32	8,255.00	8,259.99	1,231.32
7,510.00	7,514.99	1,097.22	7,760.00	7,764.99	1,142.22	8,010.00	8,014.99	1,187.22	8,260.00	8,264.99	1,232.22
7,515.00	7,519.99	1,098.12	7,765.00	7,769.99	1,143.12	8,015.00	8,019.99	1,188.12	8,265.00	8,269.99	1,233.12
7,520.00	7,524.99	1,099.02	7,770.00	7,774.99	1,144.02	8,020.00	8,024.99	1,189.02	8,270.00	8,274.99	1,234.02
7,525.00	7,529.99	1,099.92	7,775.00	7,779.99	1,144.92	8,025.00	8,029.99	1,189.92	8,275.00	8,279.99	1,234.92
7,530.00	7,534.99	1,100.82	7,780.00	7,784.99	1,145.82	8,030.00	8,034.99	1,190.82	8,280.00	8,284.99	1,235.82
7,535.00	7,539.99	1,101.72	7,785.00	7,789.99	1,146.72	8,035.00	8,039.99	1,191.72	8,285.00	8,289.99	1,236.72
7,540.00	7,544.99	1,102.62	7,790.00	7,794.99	1,147.62	8,040.00	8,044.99	1,192.62	8,290.00	8,294.99	1,237.62
7,545.00	7,549.99	1,103.52	7,795.00	7,799.99	1,148.52	8,045.00	8,049.99	1,193.52	8,295.00	8,299.99	1,238.52
7,550.00	7,554.99	1,104.42	7,800.00	7,804.99	1,149.42	8,050.00	8,054.99	1,194.42	8,300.00	8,304.99	1,239.42
7,555.00	7,559.99	1,105.32	7,805.00	7,809.99	1,150.32	8,055.00	8,059.99	1,195.32	8,305.00	8,309.99	1,240.32
7,560.00	7,564.99	1,106.22	7,810.00	7,814.99	1,151.22	8,060.00	8,064.99	1,196.22	8,310.00	8,314.99	1,241.22
7,565.00	7,569.99	1,107.12	7,815.00	7,819.99	1,152.12	8,065.00	8,069.99	1,197.12	8,315.00	8,319.99	1,242.12
7,570.00	7,574.99	1,108.02	7,820.00	7,824.99	1,153.02	8,070.00	8,074.99	1,198.02	8,320.00	8,324.99	1,243.02
7,575.00	7,579.99	1,108.92	7,825.00	7,829.99	1,153.92	8,075.00	8,079.99	1,198.92	8,325.00	8,329.99	1,243.92
7,580.00	7,584.99	1,109.82	7,830.00	7,834.99	1,154.82	8,080.00	8,084.99	1,199.82	8,330.00	8,334.99	1,244.82
7,585.00	7,589.99	1,110.72	7,835.00	7,839.99	1,155.72	8,085.00	8,089.99	1,200.72	8,335.00	8,339.99	1,245.72
7,590.00	7,594.99	1,111.62	7,840.00	7,844.99	1,156.62	8,090.00	8,094.99	1,201.62	8,340.00	8,344.99	1,246.62
7,595.00	7,599.99	1,112.52	7,845.00	7,849.99	1,157.52	8,095.00	8,099.99	1,202.52	8,345.00	8,349.99	1,247.52
7,600.00	7,604.99	1,113.42	7,850.00	7,854.99	1,158.42	8,100.00	8,104.99	1,203.42	8,350.00	8,354.99	1,248.42
7,605.00	7,609.99	1,114.32	7,855.00	7,859.99	1,159.32	8,105.00	8,109.99	1,204.32	8,355.00	8,359.99	1,249.32
7,610.00	7,614.99	1,115.22	7,860.00	7,864.99	1,160.22	8,110.00	8,114.99	1,205.22	8,360.00	8,364.99	1,250.22
7,615.00	7,619.99	1,116.12	7,865.00	7,869.99	1,161.12	8,115.00	8,119.99	1,206.12	8,365.00	8,369.99	1,251.12
7,620.00	7,624.99	1,117.02	7,870.00	7,874.99	1,162.02	8,120.00	8,124.99	1,207.02	8,370.00	8,374.99	1,252.02
7,625.00	7,629.99	1,117.92	7,875.00	7,879.99	1,162.92	8,125.00	8,129.99	1,207.92	8,375.00	8,379.99	1,252.92
7,630.00	7,634.99	1,118.82	7,880.00	7,884.99	1,163.82	8,130.00	8,134.99	1,208.82	8,380.00	8,384.99	1,253.82
7,635.00	7,639.99	1,119.72	7,885.00	7,889.99	1,164.72	8,135.00	8,139.99	1,209.72	8,385.00	8,389.99	1,254.72
7,640.00	7,644.99	1,120.62	7,890.00	7,894.99	1,165.62	8,140.00	8,144.99	1,210.62	8,390.00	8,394.99	1,255.62
7,645.00	7,649.99	1,121.52	7,895.00	7,899.99	1,166.52	8,145.00	8,149.99	1,211.52	8,395.00	8,399.99	1,256.52

One-month PA table

Actual Contributory Earnings (\$)		Member PA (\$)	Actual Contributory Earnings (\$)		Member PA (\$)	Actual Contributory Earnings (\$)		Member PA (\$)	Actual Contributory Earnings (\$)		Member PA (\$)
8,400.00	8,404.99	1,257.42	8,500.00	8,504.99	1,275.42	8,600.00	8,604.99	1,293.42	8,700.00	8,704.99	1,311.42
8,405.00	8,409.99	1,258.32	8,505.00	8,509.99	1,276.32	8,605.00	8,609.99	1,294.32	8,705.00	8,709.99	1,312.32
8,410.00	8,414.99	1,259.22	8,510.00	8,514.99	1,277.22	8,610.00	8,614.99	1,295.22	8,710.00	8,714.99	1,313.22
8,415.00	8,419.99	1,260.12	8,515.00	8,519.99	1,278.12	8,615.00	8,619.99	1,296.12	8,715.00	8,719.99	1,314.12
8,420.00	8,424.99	1,261.02	8,520.00	8,524.99	1,279.02	8,620.00	8,624.99	1,297.02	8,720.00	8,724.99	1,315.02
8,425.00	8,429.99	1,261.92	8,525.00	8,529.99	1,279.92	8,625.00	8,629.99	1,297.92	8,725.00	8,729.99	1,315.92
8,430.00	8,434.99	1,262.82	8,530.00	8,534.99	1,280.82	8,630.00	8,634.99	1,298.82	8,730.00	8,734.99	1,316.82
8,435.00	8,439.99	1,263.72	8,535.00	8,539.99	1,281.72	8,635.00	8,639.99	1,299.72	8,735.00	8,739.99	1,317.72
8,440.00	8,444.99	1,264.62	8,540.00	8,544.99	1,282.62	8,640.00	8,644.99	1,300.62	8,740.00	8,744.99	1,318.62
8,445.00	8,449.99	1,265.52	8,545.00	8,549.99	1,283.52	8,645.00	8,649.99	1,301.52	8,745.00	8,749.99	1,319.52
8,450.00	8,454.99	1,266.42	8,550.00	8,554.99	1,284.42	8,650.00	8,654.99	1,302.42	8,750.00	8,754.99	1,320.42
8,455.00	8,459.99	1,267.32	8,555.00	8,559.99	1,285.32	8,655.00	8,659.99	1,303.32	8,755.00	8,759.99	1,321.32
8,460.00	8,464.99	1,268.22	8,560.00	8,564.99	1,286.22	8,660.00	8,664.99	1,304.22	8,760.00	8,764.99	1,322.22
8,465.00	8,469.99	1,269.12	8,565.00	8,569.99	1,287.12	8,665.00	8,669.99	1,305.12	8,765.00	8,769.99	1,323.12
8,470.00	8,474.99	1,270.02	8,570.00	8,574.99	1,288.02	8,670.00	8,674.99	1,306.02	8,770.00	8,774.99	1,324.02
8,475.00	8,479.99	1,270.92	8,575.00	8,579.99	1,288.92	8,675.00	8,679.99	1,306.92	8,775.00	8,779.99	1,324.92
8,480.00	8,484.99	1,271.82	8,580.00	8,584.99	1,289.82	8,680.00	8,684.99	1,307.82	8,780.00	And up	1,325.00
8,485.00	8,489.99	1,272.72	8,585.00	8,589.99	1,290.72	8,685.00	8,689.99	1,308.72			
8,490.00	8,494.99	1,273.62	8,590.00	8,594.99	1,291.62	8,690.00	8,694.99	1,309.62			
8,495.00	8,499.99	1,274.52	8,595.00	8,599.99	1,292.52	8,695.00	8,699.99	1,310.52			

12-month PA table

Actual Contributory Earnings (\$)		Member PA (\$)	Actual Contributory Earnings (\$)		Member PA (\$)	Actual Contributory Earnings (\$)		Member PA (\$)	Actual Contributory Earnings (\$)		Member PA (\$)
4,800.00	4,859.99	0.00	7,800.00	7,859.99	333.73	10,800.00	10,859.99	691.48	13,800.00	13,859.99	1,049.23
4,860.00	4,919.99	0.00	7,860.00	7,919.99	340.88	10,860.00	10,919.99	698.63	13,860.00	13,919.99	1,056.38
4,920.00	4,979.99	0.00	7,920.00	7,979.99	348.04	10,920.00	10,979.99	705.79	13,920.00	13,979.99	1,063.54
4,980.00	5,039.99	0.00	7,980.00	8,039.99	355.19	10,980.00	11,039.99	712.94	13,980.00	14,039.99	1,070.69
5,040.00	5,099.99	4.60	8,040.00	8,099.99	362.35	11,040.00	11,099.99	720.10	14,040.00	14,099.99	1,077.85
5,100.00	5,159.99	11.75	8,100.00	8,159.99	369.50	11,100.00	11,159.99	727.25	14,100.00	14,159.99	1,085.00
5,160.00	5,219.99	18.91	8,160.00	8,219.99	376.66	11,160.00	11,219.99	734.41	14,160.00	14,219.99	1,092.16
5,220.00	5,279.99	26.06	8,220.00	8,279.99	383.81	11,220.00	11,279.99	741.56	14,220.00	14,279.99	1,099.31
5,280.00	5,339.99	33.22	8,280.00	8,339.99	390.97	11,280.00	11,339.99	748.72	14,280.00	14,339.99	1,106.47
5,340.00	5,399.99	40.37	8,340.00	8,399.99	398.12	11,340.00	11,399.99	755.87	14,340.00	14,399.99	1,113.62
5,400.00	5,459.99	47.53	8,400.00	8,459.99	405.28	11,400.00	11,459.99	763.03	14,400.00	14,459.99	1,120.78
5,460.00	5,519.99	54.68	8,460.00	8,519.99	412.43	11,460.00	11,519.99	770.18	14,460.00	14,519.99	1,127.93
5,520.00	5,579.99	61.84	8,520.00	8,579.99	419.59	11,520.00	11,579.99	777.34	14,520.00	14,579.99	1,135.09
5,580.00	5,639.99	68.99	8,580.00	8,639.99	426.74	11,580.00	11,639.99	784.49	14,580.00	14,639.99	1,142.24
5,640.00	5,699.99	76.15	8,640.00	8,699.99	433.90	11,640.00	11,699.99	791.65	14,640.00	14,699.99	1,149.40
5,700.00	5,759.99	83.30	8,700.00	8,759.99	441.05	11,700.00	11,759.99	798.80	14,700.00	14,759.99	1,156.55
5,760.00	5,819.99	90.46	8,760.00	8,819.99	448.21	11,760.00	11,819.99	805.96	14,760.00	14,819.99	1,163.71
5,820.00	5,879.99	97.61	8,820.00	8,879.99	455.36	11,820.00	11,879.99	813.11	14,820.00	14,879.99	1,170.86
5,880.00	5,939.99	104.77	8,880.00	8,939.99	462.52	11,880.00	11,939.99	820.27	14,880.00	14,939.99	1,178.02
5,940.00	5,999.99	111.92	8,940.00	8,999.99	469.67	11,940.00	11,999.99	827.42	14,940.00	14,999.99	1,185.17
6,000.00	6,059.99	119.08	9,000.00	9,059.99	476.83	12,000.00	12,059.99	834.58	15,000.00	15,059.99	1,192.33
6,060.00	6,119.99	126.23	9,060.00	9,119.99	483.98	12,060.00	12,119.99	841.73	15,060.00	15,119.99	1,199.48
6,120.00	6,179.99	133.39	9,120.00	9,179.99	491.14	12,120.00	12,179.99	848.89	15,120.00	15,179.99	1,206.64
6,180.00	6,239.99	140.54	9,180.00	9,239.99	498.29	12,180.00	12,239.99	856.04	15,180.00	15,239.99	1,213.79
6,240.00	6,299.99	147.70	9,240.00	9,299.99	505.45	12,240.00	12,299.99	863.20	15,240.00	15,299.99	1,220.95
6,300.00	6,359.99	154.85	9,300.00	9,359.99	512.60	12,300.00	12,359.99	870.35	15,300.00	15,359.99	1,228.10
6,360.00	6,419.99	162.01	9,360.00	9,419.99	519.76	12,360.00	12,419.99	877.51	15,360.00	15,419.99	1,235.26
6,420.00	6,479.99	169.16	9,420.00	9,479.99	526.91	12,420.00	12,479.99	884.66	15,420.00	15,479.99	1,242.41
6,480.00	6,539.99	176.32	9,480.00	9,539.99	534.07	12,480.00	12,539.99	891.82	15,480.00	15,539.99	1,249.57
6,540.00	6,599.99	183.47	9,540.00	9,599.99	541.22	12,540.00	12,599.99	898.97	15,540.00	15,599.99	1,256.72
6,600.00	6,659.99	190.63	9,600.00	9,659.99	548.38	12,600.00	12,659.99	906.13	15,600.00	15,659.99	1,263.88
6,660.00	6,719.99	197.78	9,660.00	9,719.99	555.53	12,660.00	12,719.99	913.28	15,660.00	15,719.99	1,271.03
6,720.00	6,779.99	204.94	9,720.00	9,779.99	562.69	12,720.00	12,779.99	920.44	15,720.00	15,779.99	1,278.19
6,780.00	6,839.99	212.09	9,780.00	9,839.99	569.84	12,780.00	12,839.99	927.59	15,780.00	15,839.99	1,285.34
6,840.00	6,899.99	219.25	9,840.00	9,899.99	577.00	12,840.00	12,899.99	934.75	15,840.00	15,899.99	1,292.50
6,900.00	6,959.99	226.40	9,900.00	9,959.99	584.15	12,900.00	12,959.99	941.90	15,900.00	15,959.99	1,299.65
6,960.00	7,019.99	233.56	9,960.00	10,019.99	591.31	12,960.00	13,019.99	949.06	15,960.00	16,019.99	1,306.81
7,020.00	7,079.99	240.71	10,020.00	10,079.99	598.46	13,020.00	13,079.99	956.21	16,020.00	16,079.99	1,313.96
7,080.00	7,139.99	247.87	10,080.00	10,139.99	605.62	13,080.00	13,139.99	963.37	16,080.00	16,139.99	1,321.12
7,140.00	7,199.99	255.02	10,140.00	10,199.99	612.77	13,140.00	13,199.99	970.52	16,140.00	16,199.99	1,328.27
7,200.00	7,259.99	262.18	10,200.00	10,259.99	619.93	13,200.00	13,259.99	977.68	16,200.00	16,259.99	1,335.43
7,260.00	7,319.99	269.33	10,260.00	10,319.99	627.08	13,260.00	13,319.99	984.83	16,260.00	16,319.99	1,342.58
7,320.00	7,379.99	276.49	10,320.00	10,379.99	634.24	13,320.00	13,379.99	991.99	16,320.00	16,379.99	1,349.74
7,380.00	7,439.99	283.64	10,380.00	10,439.99	641.39	13,380.00	13,439.99	999.14	16,380.00	16,439.99	1,356.89
7,440.00	7,499.99	290.80	10,440.00	10,499.99	648.55	13,440.00	13,499.99	1,006.30	16,440.00	16,499.99	1,364.05
7,500.00	7,559.99	297.95	10,500.00	10,559.99	655.70	13,500.00	13,559.99	1,013.45	16,500.00	16,559.99	1,371.20
7,560.00	7,619.99	305.11	10,560.00	10,619.99	662.86	13,560.00	13,619.99	1,020.61	16,560.00	16,619.99	1,378.36
7,620.00	7,679.99	312.26	10,620.00	10,679.99	670.01	13,620.00	13,679.99	1,027.76	16,620.00	16,679.99	1,385.51
7,680.00	7,739.99	319.42	10,680.00	10,739.99	677.17	13,680.00	13,739.99	1,034.92	16,680.00	16,739.99	1,392.67
7,740.00	7,799.99	326.57	10,740.00	10,799.99	684.32	13,740.00	13,799.99	1,042.07	16,740.00	16,799.99	1,399.82

12-month PA table

Actual Contributory Earnings (\$)	Member PA (\$)	Actual Contributory Earnings (\$)	Member PA (\$)	Actual Contributory Earnings (\$)	Member PA (\$)	Actual Contributory Earnings (\$)	Member PA (\$)				
16,800.00	16,859.99	1,406.98	19,800.00	19,859.99	1,764.73	22,800.00	22,859.99	2,122.48	25,800.00	25,859.99	2,480.23
16,860.00	16,919.99	1,414.13	19,860.00	19,919.99	1,771.88	22,860.00	22,919.99	2,129.63	25,860.00	25,919.99	2,487.38
16,920.00	16,979.99	1,421.29	19,920.00	19,979.99	1,779.04	22,920.00	22,979.99	2,136.79	25,920.00	25,979.99	2,494.54
16,980.00	17,039.99	1,428.44	19,980.00	20,039.99	1,786.19	22,980.00	23,039.99	2,143.94	25,980.00	26,039.99	2,501.69
17,040.00	17,099.99	1,435.60	20,040.00	20,099.99	1,793.35	23,040.00	23,099.99	2,151.10	26,040.00	26,099.99	2,508.85
17,100.00	17,159.99	1,442.75	20,100.00	20,159.99	1,800.50	23,100.00	23,159.99	2,158.25	26,100.00	26,159.99	2,516.00
17,160.00	17,219.99	1,449.91	20,160.00	20,219.99	1,807.66	23,160.00	23,219.99	2,165.41	26,160.00	26,219.99	2,523.16
17,220.00	17,279.99	1,457.06	20,220.00	20,279.99	1,814.81	23,220.00	23,279.99	2,172.56	26,220.00	26,279.99	2,530.31
17,280.00	17,339.99	1,464.22	20,280.00	20,339.99	1,821.97	23,280.00	23,339.99	2,179.72	26,280.00	26,339.99	2,537.47
17,340.00	17,399.99	1,471.37	20,340.00	20,399.99	1,829.12	23,340.00	23,399.99	2,186.87	26,340.00	26,399.99	2,544.62
17,400.00	17,459.99	1,478.53	20,400.00	20,459.99	1,836.28	23,400.00	23,459.99	2,194.03	26,400.00	26,459.99	2,551.78
17,460.00	17,519.99	1,485.68	20,460.00	20,519.99	1,843.43	23,460.00	23,519.99	2,201.18	26,460.00	26,519.99	2,558.93
17,520.00	17,579.99	1,492.84	20,520.00	20,579.99	1,850.59	23,520.00	23,579.99	2,208.34	26,520.00	26,579.99	2,566.09
17,580.00	17,639.99	1,499.99	20,580.00	20,639.99	1,857.74	23,580.00	23,639.99	2,215.49	26,580.00	26,639.99	2,573.24
17,640.00	17,699.99	1,507.15	20,640.00	20,699.99	1,864.90	23,640.00	23,699.99	2,222.65	26,640.00	26,699.99	2,580.40
17,700.00	17,759.99	1,514.30	20,700.00	20,759.99	1,872.05	23,700.00	23,759.99	2,229.80	26,700.00	26,759.99	2,587.55
17,760.00	17,819.99	1,521.46	20,760.00	20,819.99	1,879.21	23,760.00	23,819.99	2,236.96	26,760.00	26,819.99	2,594.71
17,820.00	17,879.99	1,528.61	20,820.00	20,879.99	1,886.36	23,820.00	23,879.99	2,244.11	26,820.00	26,879.99	2,601.86
17,880.00	17,939.99	1,535.77	20,880.00	20,939.99	1,893.52	23,880.00	23,939.99	2,251.27	26,880.00	26,939.99	2,609.02
17,940.00	17,999.99	1,542.92	20,940.00	20,999.99	1,900.67	23,940.00	23,999.99	2,258.42	26,940.00	26,999.99	2,616.17
18,000.00	18,059.99	1,550.08	21,000.00	21,059.99	1,907.83	24,000.00	24,059.99	2,265.58	27,000.00	27,059.99	2,623.33
18,060.00	18,119.99	1,557.23	21,060.00	21,119.99	1,914.98	24,060.00	24,119.99	2,272.73	27,060.00	27,119.99	2,630.48
18,120.00	18,179.99	1,564.39	21,120.00	21,179.99	1,922.14	24,120.00	24,179.99	2,279.89	27,120.00	27,179.99	2,637.64
18,180.00	18,239.99	1,571.54	21,180.00	21,239.99	1,929.29	24,180.00	24,239.99	2,287.04	27,180.00	27,239.99	2,644.79
18,240.00	18,299.99	1,578.70	21,240.00	21,299.99	1,936.45	24,240.00	24,299.99	2,294.20	27,240.00	27,299.99	2,651.95
18,300.00	18,359.99	1,585.85	21,300.00	21,359.99	1,943.60	24,300.00	24,359.99	2,301.35	27,300.00	27,359.99	2,659.10
18,360.00	18,419.99	1,593.01	21,360.00	21,419.99	1,950.76	24,360.00	24,419.99	2,308.51	27,360.00	27,419.99	2,666.26
18,420.00	18,479.99	1,600.16	21,420.00	21,479.99	1,957.91	24,420.00	24,479.99	2,315.66	27,420.00	27,479.99	2,673.41
18,480.00	18,539.99	1,607.32	21,480.00	21,539.99	1,965.07	24,480.00	24,539.99	2,322.82	27,480.00	27,539.99	2,680.57
18,540.00	18,599.99	1,614.47	21,540.00	21,599.99	1,972.22	24,540.00	24,599.99	2,329.97	27,540.00	27,599.99	2,687.72
18,600.00	18,659.99	1,621.63	21,600.00	21,659.99	1,979.38	24,600.00	24,659.99	2,337.13	27,600.00	27,659.99	2,694.88
18,660.00	18,719.99	1,628.78	21,660.00	21,719.99	1,986.53	24,660.00	24,719.99	2,344.28	27,660.00	27,719.99	2,702.03
18,720.00	18,779.99	1,635.94	21,720.00	21,779.99	1,993.69	24,720.00	24,779.99	2,351.44	27,720.00	27,779.99	2,709.19
18,780.00	18,839.99	1,643.09	21,780.00	21,839.99	2,000.84	24,780.00	24,839.99	2,358.59	27,780.00	27,839.99	2,716.34
18,840.00	18,899.99	1,650.25	21,840.00	21,899.99	2,008.00	24,840.00	24,899.99	2,365.75	27,840.00	27,899.99	2,723.50
18,900.00	18,959.99	1,657.40	21,900.00	21,959.99	2,015.15	24,900.00	24,959.99	2,372.90	27,900.00	27,959.99	2,730.65
18,960.00	19,019.99	1,664.56	21,960.00	22,019.99	2,022.31	24,960.00	25,019.99	2,380.06	27,960.00	28,019.99	2,737.81
19,020.00	19,079.99	1,671.71	22,020.00	22,079.99	2,029.46	25,020.00	25,079.99	2,387.21	28,020.00	28,079.99	2,744.96
19,080.00	19,139.99	1,678.87	22,080.00	22,139.99	2,036.62	25,080.00	25,139.99	2,394.37	28,080.00	28,139.99	2,752.12
19,140.00	19,199.99	1,686.02	22,140.00	22,199.99	2,043.77	25,140.00	25,199.99	2,401.52	28,140.00	28,199.99	2,759.27
19,200.00	19,259.99	1,693.18	22,200.00	22,259.99	2,050.93	25,200.00	25,259.99	2,408.68	28,200.00	28,259.99	2,766.43
19,260.00	19,319.99	1,700.33	22,260.00	22,319.99	2,058.08	25,260.00	25,319.99	2,415.83	28,260.00	28,319.99	2,773.58
19,320.00	19,379.99	1,707.49	22,320.00	22,379.99	2,065.24	25,320.00	25,379.99	2,422.99	28,320.00	28,379.99	2,780.74
19,380.00	19,439.99	1,714.64	22,380.00	22,439.99	2,072.39	25,380.00	25,439.99	2,430.14	28,380.00	28,439.99	2,787.89
19,440.00	19,499.99	1,721.80	22,440.00	22,499.99	2,079.55	25,440.00	25,499.99	2,437.30	28,440.00	28,499.99	2,795.05
19,500.00	19,559.99	1,728.95	22,500.00	22,559.99	2,086.70	25,500.00	25,559.99	2,444.45	28,500.00	28,559.99	2,802.20
19,560.00	19,619.99	1,736.11	22,560.00	22,619.99	2,093.86	25,560.00	25,619.99	2,451.61	28,560.00	28,619.99	2,809.36
19,620.00	19,679.99	1,743.26	22,620.00	22,679.99	2,101.01	25,620.00	25,679.99	2,458.76	28,620.00	28,679.99	2,816.51
19,680.00	19,739.99	1,750.42	22,680.00	22,739.99	2,108.17	25,680.00	25,739.99	2,465.92	28,680.00	28,739.99	2,823.67
19,740.00	19,799.99	1,757.57	22,740.00	22,799.99	2,115.32	25,740.00	25,799.99	2,473.07	28,740.00	28,799.99	2,830.82

12-month PA table

Actual Contributory Earnings (\$)	Member PA (\$)	Actual Contributory Earnings (\$)	Member PA (\$)	Actual Contributory Earnings (\$)	Member PA (\$)	Actual Contributory Earnings (\$)	Member PA (\$)				
28,800.00	28,859.99	2,837.98	31,800.00	31,859.99	3,195.73	34,800.00	34,859.99	3,553.48	37,800.00	37,859.99	3,911.23
28,860.00	28,919.99	2,845.13	31,860.00	31,919.99	3,202.88	34,860.00	34,919.99	3,560.63	37,860.00	37,919.99	3,918.38
28,920.00	28,979.99	2,852.29	31,920.00	31,979.99	3,210.04	34,920.00	34,979.99	3,567.79	37,920.00	37,979.99	3,925.54
28,980.00	29,039.99	2,859.44	31,980.00	32,039.99	3,217.19	34,980.00	35,039.99	3,574.94	37,980.00	38,039.99	3,932.69
29,040.00	29,099.99	2,866.60	32,040.00	32,099.99	3,224.35	35,040.00	35,099.99	3,582.10	38,040.00	38,099.99	3,939.85
29,100.00	29,159.99	2,873.75	32,100.00	32,159.99	3,231.50	35,100.00	35,159.99	3,589.25	38,100.00	38,159.99	3,947.00
29,160.00	29,219.99	2,880.91	32,160.00	32,219.99	3,238.66	35,160.00	35,219.99	3,596.41	38,160.00	38,219.99	3,954.16
29,220.00	29,279.99	2,888.06	32,220.00	32,279.99	3,245.81	35,220.00	35,279.99	3,603.56	38,220.00	38,279.99	3,961.31
29,280.00	29,339.99	2,895.22	32,280.00	32,339.99	3,252.97	35,280.00	35,339.99	3,610.72	38,280.00	38,339.99	3,968.47
29,340.00	29,399.99	2,902.37	32,340.00	32,399.99	3,260.12	35,340.00	35,399.99	3,617.87	38,340.00	38,399.99	3,975.62
29,400.00	29,459.99	2,909.53	32,400.00	32,459.99	3,267.28	35,400.00	35,459.99	3,625.03	38,400.00	38,459.99	3,982.78
29,460.00	29,519.99	2,916.68	32,460.00	32,519.99	3,274.43	35,460.00	35,519.99	3,632.18	38,460.00	38,519.99	3,989.93
29,520.00	29,579.99	2,923.84	32,520.00	32,579.99	3,281.59	35,520.00	35,579.99	3,639.34	38,520.00	38,579.99	3,997.09
29,580.00	29,639.99	2,930.99	32,580.00	32,639.99	3,288.74	35,580.00	35,639.99	3,646.49	38,580.00	38,639.99	4,004.24
29,640.00	29,699.99	2,938.15	32,640.00	32,699.99	3,295.90	35,640.00	35,699.99	3,653.65	38,640.00	38,699.99	4,011.40
29,700.00	29,759.99	2,945.30	32,700.00	32,759.99	3,303.05	35,700.00	35,759.99	3,660.80	38,700.00	38,759.99	4,018.55
29,760.00	29,819.99	2,952.46	32,760.00	32,819.99	3,310.21	35,760.00	35,819.99	3,667.96	38,760.00	38,819.99	4,025.71
29,820.00	29,879.99	2,959.61	32,820.00	32,879.99	3,317.36	35,820.00	35,879.99	3,675.11	38,820.00	38,879.99	4,032.86
29,880.00	29,939.99	2,966.77	32,880.00	32,939.99	3,324.52	35,880.00	35,939.99	3,682.27	38,880.00	38,939.99	4,040.02
29,940.00	29,999.99	2,973.92	32,940.00	32,999.99	3,331.67	35,940.00	35,999.99	3,689.42	38,940.00	38,999.99	4,047.17
30,000.00	30,059.99	2,981.08	33,000.00	33,059.99	3,338.83	36,000.00	36,059.99	3,696.58	39,000.00	39,059.99	4,054.33
30,060.00	30,119.99	2,988.23	33,060.00	33,119.99	3,345.98	36,060.00	36,119.99	3,703.73	39,060.00	39,119.99	4,061.48
30,120.00	30,179.99	2,995.39	33,120.00	33,179.99	3,353.14	36,120.00	36,179.99	3,710.89	39,120.00	39,179.99	4,068.64
30,180.00	30,239.99	3,002.54	33,180.00	33,239.99	3,360.29	36,180.00	36,239.99	3,718.04	39,180.00	39,239.99	4,075.79
30,240.00	30,299.99	3,009.70	33,240.00	33,299.99	3,367.45	36,240.00	36,299.99	3,725.20	39,240.00	39,299.99	4,082.95
30,300.00	30,359.99	3,016.85	33,300.00	33,359.99	3,374.60	36,300.00	36,359.99	3,732.35	39,300.00	39,359.99	4,090.10
30,360.00	30,419.99	3,024.01	33,360.00	33,419.99	3,381.76	36,360.00	36,419.99	3,739.51	39,360.00	39,419.99	4,097.26
30,420.00	30,479.99	3,031.16	33,420.00	33,479.99	3,388.91	36,420.00	36,479.99	3,746.66	39,420.00	39,479.99	4,104.41
30,480.00	30,539.99	3,038.32	33,480.00	33,539.99	3,396.07	36,480.00	36,539.99	3,753.82	39,480.00	39,539.99	4,111.57
30,540.00	30,599.99	3,045.47	33,540.00	33,599.99	3,403.22	36,540.00	36,599.99	3,760.97	39,540.00	39,599.99	4,118.72
30,600.00	30,659.99	3,052.63	33,600.00	33,659.99	3,410.38	36,600.00	36,659.99	3,768.13	39,600.00	39,659.99	4,125.88
30,660.00	30,719.99	3,059.78	33,660.00	33,719.99	3,417.53	36,660.00	36,719.99	3,775.28	39,660.00	39,719.99	4,133.03
30,720.00	30,779.99	3,066.94	33,720.00	33,779.99	3,424.69	36,720.00	36,779.99	3,782.44	39,720.00	39,779.99	4,140.19
30,780.00	30,839.99	3,074.09	33,780.00	33,839.99	3,431.84	36,780.00	36,839.99	3,789.59	39,780.00	39,839.99	4,147.34
30,840.00	30,899.99	3,081.25	33,840.00	33,899.99	3,439.00	36,840.00	36,899.99	3,796.75	39,840.00	39,899.99	4,154.50
30,900.00	30,959.99	3,088.40	33,900.00	33,959.99	3,446.15	36,900.00	36,959.99	3,803.90	39,900.00	39,959.99	4,161.65
30,960.00	31,019.99	3,095.56	33,960.00	34,019.99	3,453.31	36,960.00	37,019.99	3,811.06	39,960.00	40,019.99	4,168.81
31,020.00	31,079.99	3,102.71	34,020.00	34,079.99	3,460.46	37,020.00	37,079.99	3,818.21	40,020.00	40,079.99	4,175.96
31,080.00	31,139.99	3,109.87	34,080.00	34,139.99	3,467.62	37,080.00	37,139.99	3,825.37	40,080.00	40,139.99	4,183.12
31,140.00	31,199.99	3,117.02	34,140.00	34,199.99	3,474.77	37,140.00	37,199.99	3,832.52	40,140.00	40,199.99	4,190.27
31,200.00	31,259.99	3,124.18	34,200.00	34,259.99	3,481.93	37,200.00	37,259.99	3,839.68	40,200.00	40,259.99	4,197.43
31,260.00	31,319.99	3,131.33	34,260.00	34,319.99	3,489.08	37,260.00	37,319.99	3,846.83	40,260.00	40,319.99	4,204.58
31,320.00	31,379.99	3,138.49	34,320.00	34,379.99	3,496.24	37,320.00	37,379.99	3,853.99	40,320.00	40,379.99	4,211.74
31,380.00	31,439.99	3,145.64	34,380.00	34,439.99	3,503.39	37,380.00	37,439.99	3,861.14	40,380.00	40,439.99	4,218.89
31,440.00	31,499.99	3,152.80	34,440.00	34,499.99	3,510.55	37,440.00	37,499.99	3,868.30	40,440.00	40,499.99	4,226.05
31,500.00	31,559.99	3,159.95	34,500.00	34,559.99	3,517.70	37,500.00	37,559.99	3,875.45	40,500.00	40,559.99	4,233.21
31,560.00	31,619.99	3,167.11	34,560.00	34,619.99	3,524.86	37,560.00	37,619.99	3,882.61	40,560.00	40,619.99	4,240.36
31,620.00	31,679.99	3,174.26	34,620.00	34,679.99	3,532.01	37,620.00	37,679.99	3,889.76	40,620.00	40,679.99	4,247.52
31,680.00	31,739.99	3,181.42	34,680.00	34,739.99	3,539.17	37,680.00	37,739.99	3,896.92	40,680.00	40,739.99	4,254.67
31,740.00	31,799.99	3,188.57	34,740.00	34,799.99	3,546.32	37,740.00	37,799.99	3,904.07	40,740.00	40,799.99	4,261.82

12-month PA table

Actual Contributory Earnings (\$)	Member PA (\$)	Actual Contributory Earnings (\$)	Member PA (\$)	Actual Contributory Earnings (\$)	Member PA (\$)	Actual Contributory Earnings (\$)	Member PA (\$)				
40,800.00	40,859.99	4,289.02	43,800.00	43,859.99	4,829.02	46,800.00	46,859.99	5,369.02	49,800.00	49,859.99	5,909.02
40,860.00	40,919.99	4,299.82	43,860.00	43,919.99	4,839.82	46,860.00	46,919.99	5,379.82	49,860.00	49,919.99	5,919.82
40,920.00	40,979.99	4,310.62	43,920.00	43,979.99	4,850.62	46,920.00	46,979.99	5,390.62	49,920.00	49,979.99	5,930.62
40,980.00	41,039.99	4,321.42	43,980.00	44,039.99	4,861.42	46,980.00	47,039.99	5,401.42	49,980.00	50,039.99	5,941.42
41,040.00	41,099.99	4,332.22	44,040.00	44,099.99	4,872.22	47,040.00	47,099.99	5,412.22	50,040.00	50,099.99	5,952.22
41,100.00	41,159.99	4,343.02	44,100.00	44,159.99	4,883.02	47,100.00	47,159.99	5,423.02	50,100.00	50,159.99	5,963.02
41,160.00	41,219.99	4,353.82	44,160.00	44,219.99	4,893.82	47,160.00	47,219.99	5,433.82	50,160.00	50,219.99	5,973.82
41,220.00	41,279.99	4,364.62	44,220.00	44,279.99	4,904.62	47,220.00	47,279.99	5,444.62	50,220.00	50,279.99	5,984.62
41,280.00	41,339.99	4,375.42	44,280.00	44,339.99	4,915.42	47,280.00	47,339.99	5,455.42	50,280.00	50,339.99	5,995.42
41,340.00	41,399.99	4,386.22	44,340.00	44,399.99	4,926.22	47,340.00	47,399.99	5,466.22	50,340.00	50,399.99	6,006.22
41,400.00	41,459.99	4,397.02	44,400.00	44,459.99	4,937.02	47,400.00	47,459.99	5,477.02	50,400.00	50,459.99	6,017.02
41,460.00	41,519.99	4,407.82	44,460.00	44,519.99	4,947.82	47,460.00	47,519.99	5,487.82	50,460.00	50,519.99	6,027.82
41,520.00	41,579.99	4,418.62	44,520.00	44,579.99	4,958.62	47,520.00	47,579.99	5,498.62	50,520.00	50,579.99	6,038.62
41,580.00	41,639.99	4,429.42	44,580.00	44,639.99	4,969.42	47,580.00	47,639.99	5,509.42	50,580.00	50,639.99	6,049.42
41,640.00	41,699.99	4,440.22	44,640.00	44,699.99	4,980.22	47,640.00	47,699.99	5,520.22	50,640.00	50,699.99	6,060.22
41,700.00	41,759.99	4,451.02	44,700.00	44,759.99	4,991.02	47,700.00	47,759.99	5,531.02	50,700.00	50,759.99	6,071.02
41,760.00	41,819.99	4,461.82	44,760.00	44,819.99	5,001.82	47,760.00	47,819.99	5,541.82	50,760.00	50,819.99	6,081.82
41,820.00	41,879.99	4,472.62	44,820.00	44,879.99	5,012.62	47,820.00	47,879.99	5,552.62	50,820.00	50,879.99	6,092.62
41,880.00	41,939.99	4,483.42	44,880.00	44,939.99	5,023.42	47,880.00	47,939.99	5,563.42	50,880.00	50,939.99	6,103.42
41,940.00	41,999.99	4,494.22	44,940.00	44,999.99	5,034.22	47,940.00	47,999.99	5,574.22	50,940.00	50,999.99	6,114.22
42,000.00	42,059.99	4,505.02	45,000.00	45,059.99	5,045.02	48,000.00	48,059.99	5,585.02	51,000.00	51,059.99	6,125.02
42,060.00	42,119.99	4,515.82	45,060.00	45,119.99	5,055.82	48,060.00	48,119.99	5,595.82	51,060.00	51,119.99	6,135.82
42,120.00	42,179.99	4,526.62	45,120.00	45,179.99	5,066.62	48,120.00	48,179.99	5,606.62	51,120.00	51,179.99	6,146.62
42,180.00	42,239.99	4,537.42	45,180.00	45,239.99	5,077.42	48,180.00	48,239.99	5,617.42	51,180.00	51,239.99	6,157.42
42,240.00	42,299.99	4,548.22	45,240.00	45,299.99	5,088.22	48,240.00	48,299.99	5,628.22	51,240.00	51,299.99	6,168.22
42,300.00	42,359.99	4,559.02	45,300.00	45,359.99	5,099.02	48,300.00	48,359.99	5,639.02	51,300.00	51,359.99	6,179.02
42,360.00	42,419.99	4,569.82	45,360.00	45,419.99	5,109.82	48,360.00	48,419.99	5,649.82	51,360.00	51,419.99	6,189.82
42,420.00	42,479.99	4,580.62	45,420.00	45,479.99	5,120.62	48,420.00	48,479.99	5,660.62	51,420.00	51,479.99	6,200.62
42,480.00	42,539.99	4,591.42	45,480.00	45,539.99	5,131.42	48,480.00	48,539.99	5,671.42	51,480.00	51,539.99	6,211.42
42,540.00	42,599.99	4,602.22	45,540.00	45,599.99	5,142.22	48,540.00	48,599.99	5,682.22	51,540.00	51,599.99	6,222.22
42,600.00	42,659.99	4,613.02	45,600.00	45,659.99	5,153.02	48,600.00	48,659.99	5,693.02	51,600.00	51,659.99	6,233.02
42,660.00	42,719.99	4,623.82	45,660.00	45,719.99	5,163.82	48,660.00	48,719.99	5,703.82	51,660.00	51,719.99	6,243.82
42,720.00	42,779.99	4,634.62	45,720.00	45,779.99	5,174.62	48,720.00	48,779.99	5,714.62	51,720.00	51,779.99	6,254.62
42,780.00	42,839.99	4,645.42	45,780.00	45,839.99	5,185.42	48,780.00	48,839.99	5,725.42	51,780.00	51,839.99	6,265.42
42,840.00	42,899.99	4,656.22	45,840.00	45,899.99	5,196.22	48,840.00	48,899.99	5,736.22	51,840.00	51,899.99	6,276.22
42,900.00	42,959.99	4,667.02	45,900.00	45,959.99	5,207.02	48,900.00	48,959.99	5,747.02	51,900.00	51,959.99	6,287.02
42,960.00	43,019.99	4,677.82	45,960.00	46,019.99	5,217.82	48,960.00	49,019.99	5,757.82	51,960.00	52,019.99	6,297.82
43,020.00	43,079.99	4,688.62	46,020.00	46,079.99	5,228.62	49,020.00	49,079.99	5,768.62	52,020.00	52,079.99	6,308.62
43,080.00	43,139.99	4,699.42	46,080.00	46,139.99	5,239.42	49,080.00	49,139.99	5,779.42	52,080.00	52,139.99	6,319.42
43,140.00	43,199.99	4,710.22	46,140.00	46,199.99	5,250.22	49,140.00	49,199.99	5,790.22	52,140.00	52,199.99	6,330.22
43,200.00	43,259.99	4,721.02	46,200.00	46,259.99	5,261.02	49,200.00	49,259.99	5,801.02	52,200.00	52,259.99	6,341.02
43,260.00	43,319.99	4,731.82	46,260.00	46,319.99	5,271.82	49,260.00	49,319.99	5,811.82	52,260.00	52,319.99	6,351.82
43,320.00	43,379.99	4,742.62	46,320.00	46,379.99	5,282.62	49,320.00	49,379.99	5,822.62	52,320.00	52,379.99	6,362.62
43,380.00	43,439.99	4,753.42	46,380.00	46,439.99	5,293.42	49,380.00	49,439.99	5,833.42	52,380.00	52,439.99	6,373.42
43,440.00	43,499.99	4,764.22	46,440.00	46,499.99	5,304.22	49,440.00	49,499.99	5,844.22	52,440.00	52,499.99	6,384.22
43,500.00	43,559.99	4,775.02	46,500.00	46,559.99	5,315.02	49,500.00	49,559.99	5,855.02	52,500.00	52,559.99	6,395.02
43,560.00	43,619.99	4,785.82	46,560.00	46,619.99	5,325.82	49,560.00	49,619.99	5,865.82	52,560.00	52,619.99	6,405.82
43,620.00	43,679.99	4,796.62	46,620.00	46,679.99	5,336.62	49,620.00	49,679.99	5,876.62	52,620.00	52,679.99	6,416.62
43,680.00	43,739.99	4,807.42	46,680.00	46,739.99	5,347.42	49,680.00	49,739.99	5,887.42	52,680.00	52,739.99	6,427.42
43,740.00	43,799.99	4,818.22	46,740.00	46,799.99	5,358.22	49,740.00	49,799.99	5,898.22	52,740.00	52,799.99	6,438.22

12-month PA table

Actual Contributory Earnings (\$)		Member PA (\$)	Actual Contributory Earnings (\$)		Member PA (\$)	Actual Contributory Earnings (\$)		Member PA (\$)	Actual Contributory Earnings (\$)		Member PA (\$)
52,800.00	52,859.99	6,449.02	55,800.00	55,859.99	6,989.02	58,800.00	58,859.99	7,529.02	61,800.00	61,859.99	8,069.02
52,860.00	52,919.99	6,459.82	55,860.00	55,919.99	6,999.82	58,860.00	58,919.99	7,539.82	61,860.00	61,919.99	8,079.82
52,920.00	52,979.99	6,470.62	55,920.00	55,979.99	7,010.62	58,920.00	58,979.99	7,550.62	61,920.00	61,979.99	8,090.62
52,980.00	53,039.99	6,481.42	55,980.00	56,039.99	7,021.42	58,980.00	59,039.99	7,561.42	61,980.00	62,039.99	8,101.42
53,040.00	53,099.99	6,492.22	56,040.00	56,099.99	7,032.22	59,040.00	59,099.99	7,572.22	62,040.00	62,099.99	8,112.22
53,100.00	53,159.99	6,503.02	56,100.00	56,159.99	7,043.02	59,100.00	59,159.99	7,583.02	62,100.00	62,159.99	8,123.02
53,160.00	53,219.99	6,513.82	56,160.00	56,219.99	7,053.82	59,160.00	59,219.99	7,593.82	62,160.00	62,219.99	8,133.82
53,220.00	53,279.99	6,524.62	56,220.00	56,279.99	7,064.62	59,220.00	59,279.99	7,604.62	62,220.00	62,279.99	8,144.62
53,280.00	53,339.99	6,535.42	56,280.00	56,339.99	7,075.42	59,280.00	59,339.99	7,615.42	62,280.00	62,339.99	8,155.42
53,340.00	53,399.99	6,546.22	56,340.00	56,399.99	7,086.22	59,340.00	59,399.99	7,626.22	62,340.00	62,399.99	8,166.22
53,400.00	53,459.99	6,557.02	56,400.00	56,459.99	7,097.02	59,400.00	59,459.99	7,637.02	62,400.00	62,459.99	8,177.02
53,460.00	53,519.99	6,567.82	56,460.00	56,519.99	7,107.82	59,460.00	59,519.99	7,647.82	62,460.00	62,519.99	8,187.82
53,520.00	53,579.99	6,578.62	56,520.00	56,579.99	7,118.62	59,520.00	59,579.99	7,658.62	62,520.00	62,579.99	8,198.62
53,580.00	53,639.99	6,589.42	56,580.00	56,639.99	7,129.42	59,580.00	59,639.99	7,669.42	62,580.00	62,639.99	8,209.42
53,640.00	53,699.99	6,600.22	56,640.00	56,699.99	7,140.22	59,640.00	59,699.99	7,680.22	62,640.00	62,699.99	8,220.22
53,700.00	53,759.99	6,611.02	56,700.00	56,759.99	7,151.02	59,700.00	59,759.99	7,691.02	62,700.00	62,759.99	8,231.02
53,760.00	53,819.99	6,621.82	56,760.00	56,819.99	7,161.82	59,760.00	59,819.99	7,701.82	62,760.00	62,819.99	8,241.82
53,820.00	53,879.99	6,632.62	56,820.00	56,879.99	7,172.62	59,820.00	59,879.99	7,712.62	62,820.00	62,879.99	8,252.62
53,880.00	53,939.99	6,643.42	56,880.00	56,939.99	7,183.42	59,880.00	59,939.99	7,723.42	62,880.00	62,939.99	8,263.42
53,940.00	53,999.99	6,654.22	56,940.00	56,999.99	7,194.22	59,940.00	59,999.99	7,734.22	62,940.00	62,999.99	8,274.22
54,000.00	54,059.99	6,665.02	57,000.00	57,059.99	7,205.02	60,000.00	60,059.99	7,745.02	63,000.00	63,059.99	8,285.02
54,060.00	54,119.99	6,675.82	57,060.00	57,119.99	7,215.82	60,060.00	60,119.99	7,755.82	63,060.00	63,119.99	8,295.82
54,120.00	54,179.99	6,686.62	57,120.00	57,179.99	7,226.62	60,120.00	60,179.99	7,766.62	63,120.00	63,179.99	8,306.62
54,180.00	54,239.99	6,697.42	57,180.00	57,239.99	7,237.42	60,180.00	60,239.99	7,777.42	63,180.00	63,239.99	8,317.42
54,240.00	54,299.99	6,708.22	57,240.00	57,299.99	7,248.22	60,240.00	60,299.99	7,788.22	63,240.00	63,299.99	8,328.22
54,300.00	54,359.99	6,719.02	57,300.00	57,359.99	7,259.02	60,300.00	60,359.99	7,799.02	63,300.00	63,359.99	8,339.02
54,360.00	54,419.99	6,729.82	57,360.00	57,419.99	7,269.82	60,360.00	60,419.99	7,809.82	63,360.00	63,419.99	8,349.82
54,420.00	54,479.99	6,740.62	57,420.00	57,479.99	7,280.62	60,420.00	60,479.99	7,820.62	63,420.00	63,479.99	8,360.62
54,480.00	54,539.99	6,751.42	57,480.00	57,539.99	7,291.42	60,480.00	60,539.99	7,831.42	63,480.00	63,539.99	8,371.42
54,540.00	54,599.99	6,762.22	57,540.00	57,599.99	7,302.22	60,540.00	60,599.99	7,842.22	63,540.00	63,599.99	8,382.22
54,600.00	54,659.99	6,773.02	57,600.00	57,659.99	7,313.02	60,600.00	60,659.99	7,853.02	63,600.00	63,659.99	8,393.02
54,660.00	54,719.99	6,783.82	57,660.00	57,719.99	7,323.82	60,660.00	60,719.99	7,863.82	63,660.00	63,719.99	8,403.82
54,720.00	54,779.99	6,794.62	57,720.00	57,779.99	7,334.62	60,720.00	60,779.99	7,874.62	63,720.00	63,779.99	8,414.62
54,780.00	54,839.99	6,805.42	57,780.00	57,839.99	7,345.42	60,780.00	60,839.99	7,885.42	63,780.00	63,839.99	8,425.42
54,840.00	54,899.99	6,816.22	57,840.00	57,899.99	7,356.22	60,840.00	60,899.99	7,896.22	63,840.00	63,899.99	8,436.22
54,900.00	54,959.99	6,827.02	57,900.00	57,959.99	7,367.02	60,900.00	60,959.99	7,907.02	63,900.00	63,959.99	8,447.02
54,960.00	55,019.99	6,837.82	57,960.00	58,019.99	7,377.82	60,960.00	61,019.99	7,917.82	63,960.00	64,019.99	8,457.82
55,020.00	55,079.99	6,848.62	58,020.00	58,079.99	7,388.62	61,020.00	61,079.99	7,928.62	64,020.00	64,079.99	8,468.62
55,080.00	55,139.99	6,859.42	58,080.00	58,139.99	7,399.42	61,080.00	61,139.99	7,939.42	64,080.00	64,139.99	8,479.42
55,140.00	55,199.99	6,870.22	58,140.00	58,199.99	7,410.22	61,140.00	61,199.99	7,950.22	64,140.00	64,199.99	8,490.22
55,200.00	55,259.99	6,881.02	58,200.00	58,259.99	7,421.02	61,200.00	61,259.99	7,961.02	64,200.00	64,259.99	8,501.02
55,260.00	55,319.99	6,891.82	58,260.00	58,319.99	7,431.82	61,260.00	61,319.99	7,971.82	64,260.00	64,319.99	8,511.82
55,320.00	55,379.99	6,902.62	58,320.00	58,379.99	7,442.62	61,320.00	61,379.99	7,982.62	64,320.00	64,379.99	8,522.62
55,380.00	55,439.99	6,913.42	58,380.00	58,439.99	7,453.42	61,380.00	61,439.99	7,993.42	64,380.00	64,439.99	8,533.42
55,440.00	55,499.99	6,924.22	58,440.00	58,499.99	7,464.22	61,440.00	61,499.99	8,004.22	64,440.00	64,499.99	8,544.22
55,500.00	55,559.99	6,935.02	58,500.00	58,559.99	7,475.02	61,500.00	61,559.99	8,015.02	64,500.00	64,559.99	8,555.02
55,560.00	55,619.99	6,945.82	58,560.00	58,619.99	7,485.82	61,560.00	61,619.99	8,025.82	64,560.00	64,619.99	8,565.82
55,620.00	55,679.99	6,956.62	58,620.00	58,679.99	7,496.62	61,620.00	61,679.99	8,036.62	64,620.00	64,679.99	8,576.62
55,680.00	55,739.99	6,967.42	58,680.00	58,739.99	7,507.42	61,680.00	61,739.99	8,047.42	64,680.00	64,739.99	8,587.42
55,740.00	55,799.99	6,978.22	58,740.00	58,799.99	7,518.22	61,740.00	61,799.99	8,058.22	64,740.00	64,799.99	8,598.22

12-month PA table

Actual Contributory Earnings (\$)	Member PA (\$)	Actual Contributory Earnings (\$)	Member PA (\$)	Actual Contributory Earnings (\$)	Member PA (\$)	Actual Contributory Earnings (\$)	Member PA (\$)				
64,800.00	64,859.99	8,609.02	67,800.00	67,859.99	9,149.02	70,800.00	70,859.99	9,689.02	73,800.00	73,859.99	10,229.02
64,860.00	64,919.99	8,619.82	67,860.00	67,919.99	9,159.82	70,860.00	70,919.99	9,699.82	73,860.00	73,919.99	10,239.82
64,920.00	64,979.99	8,630.62	67,920.00	67,979.99	9,170.62	70,920.00	70,979.99	9,710.62	73,920.00	73,979.99	10,250.62
64,980.00	65,039.99	8,641.42	67,980.00	68,039.99	9,181.42	70,980.00	71,039.99	9,721.42	73,980.00	74,039.99	10,261.42
65,040.00	65,099.99	8,652.22	68,040.00	68,099.99	9,192.22	71,040.00	71,099.99	9,732.22	74,040.00	74,099.99	10,272.22
65,100.00	65,159.99	8,663.02	68,100.00	68,159.99	9,203.02	71,100.00	71,159.99	9,743.02	74,100.00	74,159.99	10,283.02
65,160.00	65,219.99	8,673.82	68,160.00	68,219.99	9,213.82	71,160.00	71,219.99	9,753.82	74,160.00	74,219.99	10,293.82
65,220.00	65,279.99	8,684.62	68,220.00	68,279.99	9,224.62	71,220.00	71,279.99	9,764.62	74,220.00	74,279.99	10,304.62
65,280.00	65,339.99	8,695.42	68,280.00	68,339.99	9,235.42	71,280.00	71,339.99	9,775.42	74,280.00	74,339.99	10,315.42
65,340.00	65,399.99	8,706.22	68,340.00	68,399.99	9,246.22	71,340.00	71,399.99	9,786.22	74,340.00	74,399.99	10,326.22
65,400.00	65,459.99	8,717.02	68,400.00	68,459.99	9,257.02	71,400.00	71,459.99	9,797.02	74,400.00	74,459.99	10,337.02
65,460.00	65,519.99	8,727.82	68,460.00	68,519.99	9,267.82	71,460.00	71,519.99	9,807.82	74,460.00	74,519.99	10,347.82
65,520.00	65,579.99	8,738.62	68,520.00	68,579.99	9,278.62	71,520.00	71,579.99	9,818.62	74,520.00	74,579.99	10,358.62
65,580.00	65,639.99	8,749.42	68,580.00	68,639.99	9,289.42	71,580.00	71,639.99	9,829.42	74,580.00	74,639.99	10,369.42
65,640.00	65,699.99	8,760.22	68,640.00	68,699.99	9,300.22	71,640.00	71,699.99	9,840.22	74,640.00	74,699.99	10,380.22
65,700.00	65,759.99	8,771.02	68,700.00	68,759.99	9,311.02	71,700.00	71,759.99	9,851.02	74,700.00	74,759.99	10,391.02
65,760.00	65,819.99	8,781.82	68,760.00	68,819.99	9,321.82	71,760.00	71,819.99	9,861.82	74,760.00	74,819.99	10,401.82
65,820.00	65,879.99	8,792.62	68,820.00	68,879.99	9,332.62	71,820.00	71,879.99	9,872.62	74,820.00	74,879.99	10,412.62
65,880.00	65,939.99	8,803.42	68,880.00	68,939.99	9,343.42	71,880.00	71,939.99	9,883.42	74,880.00	74,939.99	10,423.42
65,940.00	65,999.99	8,814.22	68,940.00	68,999.99	9,354.22	71,940.00	71,999.99	9,894.22	74,940.00	74,999.99	10,434.22
66,000.00	66,059.99	8,825.02	69,000.00	69,059.99	9,365.02	72,000.00	72,059.99	9,905.02	75,000.00	75,059.99	10,445.02
66,060.00	66,119.99	8,835.82	69,060.00	69,119.99	9,375.82	72,060.00	72,119.99	9,915.82	75,060.00	75,119.99	10,455.82
66,120.00	66,179.99	8,846.62	69,120.00	69,179.99	9,386.62	72,120.00	72,179.99	9,926.62	75,120.00	75,179.99	10,466.62
66,180.00	66,239.99	8,857.42	69,180.00	69,239.99	9,397.42	72,180.00	72,239.99	9,937.42	75,180.00	75,239.99	10,477.42
66,240.00	66,299.99	8,868.22	69,240.00	69,299.99	9,408.22	72,240.00	72,299.99	9,948.22	75,240.00	75,299.99	10,488.22
66,300.00	66,359.99	8,879.02	69,300.00	69,359.99	9,419.02	72,300.00	72,359.99	9,959.02	75,300.00	75,359.99	10,499.02
66,360.00	66,419.99	8,889.82	69,360.00	69,419.99	9,429.82	72,360.00	72,419.99	9,969.82	75,360.00	75,419.99	10,509.82
66,420.00	66,479.99	8,900.62	69,420.00	69,479.99	9,440.62	72,420.00	72,479.99	9,980.62	75,420.00	75,479.99	10,520.62
66,480.00	66,539.99	8,911.42	69,480.00	69,539.99	9,451.42	72,480.00	72,539.99	9,991.42	75,480.00	75,539.99	10,531.42
66,540.00	66,599.99	8,922.22	69,540.00	69,599.99	9,462.22	72,540.00	72,599.99	10,002.22	75,540.00	75,599.99	10,542.22
66,600.00	66,659.99	8,933.02	69,600.00	69,659.99	9,473.02	72,600.00	72,659.99	10,013.02	75,600.00	75,659.99	10,553.02
66,660.00	66,719.99	8,943.82	69,660.00	69,719.99	9,483.82	72,660.00	72,719.99	10,023.82	75,660.00	75,719.99	10,563.82
66,720.00	66,779.99	8,954.62	69,720.00	69,779.99	9,494.62	72,720.00	72,779.99	10,034.62	75,720.00	75,779.99	10,574.62
66,780.00	66,839.99	8,965.42	69,780.00	69,839.99	9,505.42	72,780.00	72,839.99	10,045.42	75,780.00	75,839.99	10,585.42
66,840.00	66,899.99	8,976.22	69,840.00	69,899.99	9,516.22	72,840.00	72,899.99	10,056.22	75,840.00	75,899.99	10,596.22
66,900.00	66,959.99	8,987.02	69,900.00	69,959.99	9,527.02	72,900.00	72,959.99	10,067.02	75,900.00	75,959.99	10,607.02
66,960.00	67,019.99	8,997.82	69,960.00	70,019.99	9,537.82	72,960.00	73,019.99	10,077.82	75,960.00	76,019.99	10,617.82
67,020.00	67,079.99	9,008.62	70,020.00	70,079.99	9,548.62	73,020.00	73,079.99	10,088.62	76,020.00	76,079.99	10,628.62
67,080.00	67,139.99	9,019.42	70,080.00	70,139.99	9,559.42	73,080.00	73,139.99	10,099.42	76,080.00	76,139.99	10,639.42
67,140.00	67,199.99	9,030.22	70,140.00	70,199.99	9,570.22	73,140.00	73,199.99	10,110.22	76,140.00	76,199.99	10,650.22
67,200.00	67,259.99	9,041.02	70,200.00	70,259.99	9,581.02	73,200.00	73,259.99	10,121.02	76,200.00	76,259.99	10,661.02
67,260.00	67,319.99	9,051.82	70,260.00	70,319.99	9,591.82	73,260.00	73,319.99	10,131.82	76,260.00	76,319.99	10,671.82
67,320.00	67,379.99	9,062.62	70,320.00	70,379.99	9,602.62	73,320.00	73,379.99	10,142.62	76,320.00	76,379.99	10,682.62
67,380.00	67,439.99	9,073.42	70,380.00	70,439.99	9,613.42	73,380.00	73,439.99	10,153.42	76,380.00	76,439.99	10,693.42
67,440.00	67,499.99	9,084.22	70,440.00	70,499.99	9,624.22	73,440.00	73,499.99	10,164.22	76,440.00	76,499.99	10,704.22
67,500.00	67,559.99	9,095.02	70,500.00	70,559.99	9,635.02	73,500.00	73,559.99	10,175.02	76,500.00	76,559.99	10,715.02
67,560.00	67,619.99	9,105.82	70,560.00	70,619.99	9,645.82	73,560.00	73,619.99	10,185.82	76,560.00	76,619.99	10,725.82
67,620.00	67,679.99	9,116.62	70,620.00	70,679.99	9,656.62	73,620.00	73,679.99	10,196.62	76,620.00	76,679.99	10,736.62
67,680.00	67,739.99	9,127.42	70,680.00	70,739.99	9,667.42	73,680.00	73,739.99	10,207.42	76,680.00	76,739.99	10,747.42
67,740.00	67,799.99	9,138.22	70,740.00	70,799.99	9,678.22	73,740.00	73,799.99	10,218.22	76,740.00	76,799.99	10,758.22

12-month PA table

Actual Contributory Earnings (\$)	Member PA (\$)	Actual Contributory Earnings (\$)	Member PA (\$)	Actual Contributory Earnings (\$)	Member PA (\$)	Actual Contributory Earnings (\$)	Member PA (\$)				
76,800.00	76,859.99	10,769.02	79,800.00	79,859.99	11,309.02	82,800.00	82,859.99	11,849.02	85,800.00	85,859.99	12,389.02
76,860.00	76,919.99	10,779.82	79,860.00	79,919.99	11,319.82	82,860.00	82,919.99	11,859.82	85,860.00	85,919.99	12,399.82
76,920.00	76,979.99	10,790.62	79,920.00	79,979.99	11,330.62	82,920.00	82,979.99	11,870.62	85,920.00	85,979.99	12,410.62
76,980.00	77,039.99	10,801.42	79,980.00	80,039.99	11,341.42	82,980.00	83,039.99	11,881.42	85,980.00	86,039.99	12,421.42
77,040.00	77,099.99	10,812.22	80,040.00	80,099.99	11,352.22	83,040.00	83,099.99	11,892.22	86,040.00	86,099.99	12,432.22
77,100.00	77,159.99	10,823.02	80,100.00	80,159.99	11,363.02	83,100.00	83,159.99	11,903.02	86,100.00	86,159.99	12,443.02
77,160.00	77,219.99	10,833.82	80,160.00	80,219.99	11,373.82	83,160.00	83,219.99	11,913.82	86,160.00	86,219.99	12,453.82
77,220.00	77,279.99	10,844.62	80,220.00	80,279.99	11,384.62	83,220.00	83,279.99	11,924.62	86,220.00	86,279.99	12,464.62
77,280.00	77,339.99	10,855.42	80,280.00	80,339.99	11,395.42	83,280.00	83,339.99	11,935.42	86,280.00	86,339.99	12,475.42
77,340.00	77,399.99	10,866.22	80,340.00	80,399.99	11,406.22	83,340.00	83,399.99	11,946.22	86,340.00	86,399.99	12,486.22
77,400.00	77,459.99	10,877.02	80,400.00	80,459.99	11,417.02	83,400.00	83,459.99	11,957.02	86,400.00	86,459.99	12,497.02
77,460.00	77,519.99	10,887.82	80,460.00	80,519.99	11,427.82	83,460.00	83,519.99	11,967.82	86,460.00	86,519.99	12,507.82
77,520.00	77,579.99	10,898.62	80,520.00	80,579.99	11,438.62	83,520.00	83,579.99	11,978.62	86,520.00	86,579.99	12,518.62
77,580.00	77,639.99	10,909.42	80,580.00	80,639.99	11,449.42	83,580.00	83,639.99	11,989.42	86,580.00	86,639.99	12,529.42
77,640.00	77,699.99	10,920.22	80,640.00	80,699.99	11,460.22	83,640.00	83,699.99	12,000.22	86,640.00	86,699.99	12,540.22
77,700.00	77,759.99	10,931.02	80,700.00	80,759.99	11,471.02	83,700.00	83,759.99	12,011.02	86,700.00	86,759.99	12,551.02
77,760.00	77,819.99	10,941.82	80,760.00	80,819.99	11,481.82	83,760.00	83,819.99	12,021.82	86,760.00	86,819.99	12,561.82
77,820.00	77,879.99	10,952.62	80,820.00	80,879.99	11,492.62	83,820.00	83,879.99	12,032.62	86,820.00	86,879.99	12,572.62
77,880.00	77,939.99	10,963.42	80,880.00	80,939.99	11,503.42	83,880.00	83,939.99	12,043.42	86,880.00	86,939.99	12,583.42
77,940.00	77,999.99	10,974.22	80,940.00	80,999.99	11,514.22	83,940.00	83,999.99	12,054.22	86,940.00	86,999.99	12,594.22
78,000.00	78,059.99	10,985.02	81,000.00	81,059.99	11,525.02	84,000.00	84,059.99	12,065.02	87,000.00	87,059.99	12,605.02
78,060.00	78,119.99	10,995.82	81,060.00	81,119.99	11,535.82	84,060.00	84,119.99	12,075.82	87,060.00	87,119.99	12,615.82
78,120.00	78,179.99	11,006.62	81,120.00	81,179.99	11,546.62	84,120.00	84,179.99	12,086.62	87,120.00	87,179.99	12,626.62
78,180.00	78,239.99	11,017.42	81,180.00	81,239.99	11,557.42	84,180.00	84,239.99	12,097.42	87,180.00	87,239.99	12,637.42
78,240.00	78,299.99	11,028.22	81,240.00	81,299.99	11,568.22	84,240.00	84,299.99	12,108.22	87,240.00	87,299.99	12,648.22
78,300.00	78,359.99	11,039.02	81,300.00	81,359.99	11,579.02	84,300.00	84,359.99	12,119.02	87,300.00	87,359.99	12,659.02
78,360.00	78,419.99	11,049.82	81,360.00	81,419.99	11,589.82	84,360.00	84,419.99	12,129.82	87,360.00	87,419.99	12,669.82
78,420.00	78,479.99	11,060.62	81,420.00	81,479.99	11,600.62	84,420.00	84,479.99	12,140.62	87,420.00	87,479.99	12,680.62
78,480.00	78,539.99	11,071.42	81,480.00	81,539.99	11,611.42	84,480.00	84,539.99	12,151.42	87,480.00	87,539.99	12,691.42
78,540.00	78,599.99	11,082.22	81,540.00	81,599.99	11,622.22	84,540.00	84,599.99	12,162.22	87,540.00	87,599.99	12,702.22
78,600.00	78,659.99	11,093.02	81,600.00	81,659.99	11,633.02	84,600.00	84,659.99	12,173.02	87,600.00	87,659.99	12,713.02
78,660.00	78,719.99	11,103.82	81,660.00	81,719.99	11,643.82	84,660.00	84,719.99	12,183.82	87,660.00	87,719.99	12,723.82
78,720.00	78,779.99	11,114.62	81,720.00	81,779.99	11,654.62	84,720.00	84,779.99	12,194.62	87,720.00	87,779.99	12,734.62
78,780.00	78,839.99	11,125.42	81,780.00	81,839.99	11,665.42	84,780.00	84,839.99	12,205.42	87,780.00	87,839.99	12,745.42
78,840.00	78,899.99	11,136.22	81,840.00	81,899.99	11,676.22	84,840.00	84,899.99	12,216.22	87,840.00	87,899.99	12,756.22
78,900.00	78,959.99	11,147.02	81,900.00	81,959.99	11,687.02	84,900.00	84,959.99	12,227.02	87,900.00	87,959.99	12,767.02
78,960.00	79,019.99	11,157.82	81,960.00	82,019.99	11,697.82	84,960.00	85,019.99	12,237.82	87,960.00	88,019.99	12,777.82
79,020.00	79,079.99	11,168.62	82,020.00	82,079.99	11,708.62	85,020.00	85,079.99	12,248.62	88,020.00	88,079.99	12,788.62
79,080.00	79,139.99	11,179.42	82,080.00	82,139.99	11,719.42	85,080.00	85,139.99	12,259.42	88,080.00	88,139.99	12,799.42
79,140.00	79,199.99	11,190.22	82,140.00	82,199.99	11,730.22	85,140.00	85,199.99	12,270.22	88,140.00	88,199.99	12,810.22
79,200.00	79,259.99	11,201.02	82,200.00	82,259.99	11,741.02	85,200.00	85,259.99	12,281.02	88,200.00	88,259.99	12,821.02
79,260.00	79,319.99	11,211.82	82,260.00	82,319.99	11,751.82	85,260.00	85,319.99	12,291.82	88,260.00	88,319.99	12,831.82
79,320.00	79,379.99	11,222.62	82,320.00	82,379.99	11,762.62	85,320.00	85,379.99	12,302.62	88,320.00	88,379.99	12,842.62
79,380.00	79,439.99	11,233.42	82,380.00	82,439.99	11,773.42	85,380.00	85,439.99	12,313.42	88,380.00	88,439.99	12,853.42
79,440.00	79,499.99	11,244.22	82,440.00	82,499.99	11,784.22	85,440.00	85,499.99	12,324.22	88,440.00	88,499.99	12,864.22
79,500.00	79,559.99	11,255.02	82,500.00	82,559.99	11,795.02	85,500.00	85,559.99	12,335.02	88,500.00	88,559.99	12,875.02
79,560.00	79,619.99	11,265.82	82,560.00	82,619.99	11,805.82	85,560.00	85,619.99	12,345.82	88,560.00	88,619.99	12,885.82
79,620.00	79,679.99	11,276.62	82,620.00	82,679.99	11,816.62	85,620.00	85,679.99	12,356.62	88,620.00	88,679.99	12,896.62
79,680.00	79,739.99	11,287.42	82,680.00	82,739.99	11,827.42	85,680.00	85,739.99	12,367.42	88,680.00	88,739.99	12,907.42
79,740.00	79,799.99	11,298.22	82,740.00	82,799.99	11,838.22	85,740.00	85,799.99	12,378.22	88,740.00	88,799.99	12,918.22

12-month PA table

Actual Contributory Earnings (\$)	Member PA (\$)	Actual Contributory Earnings (\$)	Member PA (\$)	Actual Contributory Earnings (\$)	Member PA (\$)	Actual Contributory Earnings (\$)	Member PA (\$)				
88,800.00	88,859.99	12,929.02	91,800.00	91,859.99	13,469.02	94,800.00	94,859.99	14,009.02	97,800.00	97,859.99	14,549.02
88,860.00	88,919.99	12,939.82	91,860.00	91,919.99	13,479.82	94,860.00	94,919.99	14,019.82	97,860.00	97,919.99	14,559.82
88,920.00	88,979.99	12,950.62	91,920.00	91,979.99	13,490.62	94,920.00	94,979.99	14,030.62	97,920.00	97,979.99	14,570.62
88,980.00	89,039.99	12,961.42	91,980.00	92,039.99	13,501.42	94,980.00	95,039.99	14,041.42	97,980.00	98,039.99	14,581.42
89,040.00	89,099.99	12,972.22	92,040.00	92,099.99	13,512.22	95,040.00	95,099.99	14,052.22	98,040.00	98,099.99	14,592.22
89,100.00	89,159.99	12,983.02	92,100.00	92,159.99	13,523.02	95,100.00	95,159.99	14,063.02	98,100.00	98,159.99	14,603.02
89,160.00	89,219.99	12,993.82	92,160.00	92,219.99	13,533.82	95,160.00	95,219.99	14,073.82	98,160.00	98,219.99	14,613.82
89,220.00	89,279.99	13,004.62	92,220.00	92,279.99	13,544.62	95,220.00	95,279.99	14,084.62	98,220.00	98,279.99	14,624.62
89,280.00	89,339.99	13,015.42	92,280.00	92,339.99	13,555.42	95,280.00	95,339.99	14,095.42	98,280.00	98,339.99	14,635.42
89,340.00	89,399.99	13,026.22	92,340.00	92,399.99	13,566.22	95,340.00	95,399.99	14,106.22	98,340.00	98,399.99	14,646.22
89,400.00	89,459.99	13,037.02	92,400.00	92,459.99	13,577.02	95,400.00	95,459.99	14,117.02	98,400.00	98,459.99	14,657.02
89,460.00	89,519.99	13,047.82	92,460.00	92,519.99	13,587.82	95,460.00	95,519.99	14,127.82	98,460.00	98,519.99	14,667.82
89,520.00	89,579.99	13,058.62	92,520.00	92,579.99	13,598.62	95,520.00	95,579.99	14,138.62	98,520.00	98,579.99	14,678.62
89,580.00	89,639.99	13,069.42	92,580.00	92,639.99	13,609.42	95,580.00	95,639.99	14,149.42	98,580.00	98,639.99	14,689.42
89,640.00	89,699.99	13,080.22	92,640.00	92,699.99	13,620.22	95,640.00	95,699.99	14,160.22	98,640.00	98,699.99	14,700.22
89,700.00	89,759.99	13,091.02	92,700.00	92,759.99	13,631.02	95,700.00	95,759.99	14,171.02	98,700.00	98,759.99	14,711.02
89,760.00	89,819.99	13,101.82	92,760.00	92,819.99	13,641.82	95,760.00	95,819.99	14,181.82	98,760.00	98,819.99	14,721.82
89,820.00	89,879.99	13,112.62	92,820.00	92,879.99	13,652.62	95,820.00	95,879.99	14,192.62	98,820.00	98,879.99	14,732.62
89,880.00	89,939.99	13,123.42	92,880.00	92,939.99	13,663.42	95,880.00	95,939.99	14,203.42	98,880.00	98,939.99	14,743.42
89,940.00	89,999.99	13,134.22	92,940.00	92,999.99	13,674.22	95,940.00	95,999.99	14,214.22	98,940.00	98,999.99	14,754.22
90,000.00	90,059.99	13,145.02	93,000.00	93,059.99	13,685.02	96,000.00	96,059.99	14,225.02	99,000.00	99,059.99	14,765.02
90,060.00	90,119.99	13,155.82	93,060.00	93,119.99	13,695.82	96,060.00	96,119.99	14,235.82	99,060.00	99,119.99	14,775.82
90,120.00	90,179.99	13,166.62	93,120.00	93,179.99	13,706.62	96,120.00	96,179.99	14,246.62	99,120.00	99,179.99	14,786.62
90,180.00	90,239.99	13,177.42	93,180.00	93,239.99	13,717.42	96,180.00	96,239.99	14,257.42	99,180.00	99,239.99	14,797.42
90,240.00	90,299.99	13,188.22	93,240.00	93,299.99	13,728.22	96,240.00	96,299.99	14,268.22	99,240.00	99,299.99	14,808.22
90,300.00	90,359.99	13,199.02	93,300.00	93,359.99	13,739.02	96,300.00	96,359.99	14,279.02	99,300.00	99,359.99	14,819.02
90,360.00	90,419.99	13,209.82	93,360.00	93,419.99	13,749.82	96,360.00	96,419.99	14,289.82	99,360.00	99,419.99	14,829.82
90,420.00	90,479.99	13,220.62	93,420.00	93,479.99	13,760.62	96,420.00	96,479.99	14,300.62	99,420.00	99,479.99	14,840.62
90,480.00	90,539.99	13,231.42	93,480.00	93,539.99	13,771.42	96,480.00	96,539.99	14,311.42	99,480.00	99,539.99	14,851.42
90,540.00	90,599.99	13,242.22	93,540.00	93,599.99	13,782.22	96,540.00	96,599.99	14,322.22	99,540.00	99,599.99	14,862.22
90,600.00	90,659.99	13,253.02	93,600.00	93,659.99	13,793.02	96,600.00	96,659.99	14,333.02	99,600.00	99,659.99	14,873.02
90,660.00	90,719.99	13,263.82	93,660.00	93,719.99	13,803.82	96,660.00	96,719.99	14,343.82	99,660.00	99,719.99	14,883.82
90,720.00	90,779.99	13,274.62	93,720.00	93,779.99	13,814.62	96,720.00	96,779.99	14,354.62	99,720.00	99,779.99	14,894.62
90,780.00	90,839.99	13,285.42	93,780.00	93,839.99	13,825.42	96,780.00	96,839.99	14,365.42	99,780.00	99,839.99	14,905.42
90,840.00	90,899.99	13,296.22	93,840.00	93,899.99	13,836.22	96,840.00	96,899.99	14,376.22	99,840.00	99,899.99	14,916.22
90,900.00	90,959.99	13,307.02	93,900.00	93,959.99	13,847.02	96,900.00	96,959.99	14,387.02	99,900.00	99,959.99	14,927.02
90,960.00	91,019.99	13,317.82	93,960.00	94,019.99	13,857.82	96,960.00	97,019.99	14,397.82	99,960.00	100,019.99	14,937.82
91,020.00	91,079.99	13,328.62	94,020.00	94,079.99	13,868.62	97,020.00	97,079.99	14,408.62	100,020.00	100,079.99	14,948.62
91,080.00	91,139.99	13,339.42	94,080.00	94,139.99	13,879.42	97,080.00	97,139.99	14,419.42	100,080.00	100,139.99	14,959.42
91,140.00	91,199.99	13,350.22	94,140.00	94,199.99	13,890.22	97,140.00	97,199.99	14,430.22	100,140.00	100,199.99	14,970.22
91,200.00	91,259.99	13,361.02	94,200.00	94,259.99	13,901.02	97,200.00	97,259.99	14,441.02	100,200.00	100,259.99	14,981.02
91,260.00	91,319.99	13,371.82	94,260.00	94,319.99	13,911.82	97,260.00	97,319.99	14,451.82	100,260.00	100,319.99	14,991.82
91,320.00	91,379.99	13,382.62	94,320.00	94,379.99	13,922.62	97,320.00	97,379.99	14,462.62	100,320.00	100,379.99	15,002.62
91,380.00	91,439.99	13,393.42	94,380.00	94,439.99	13,933.42	97,380.00	97,439.99	14,473.42	100,380.00	100,439.99	15,013.42
91,440.00	91,499.99	13,404.22	94,440.00	94,499.99	13,944.22	97,440.00	97,499.99	14,484.22	100,440.00	100,499.99	15,024.22
91,500.00	91,559.99	13,415.02	94,500.00	94,559.99	13,955.02	97,500.00	97,559.99	14,495.02	100,500.00	100,559.99	15,035.02
91,560.00	91,619.99	13,425.82	94,560.00	94,619.99	13,965.82	97,560.00	97,619.99	14,505.82	100,560.00	100,619.99	15,045.82
91,620.00	91,679.99	13,436.62	94,620.00	94,679.99	13,976.62	97,620.00	97,679.99	14,516.62	100,620.00	100,679.99	15,056.62
91,680.00	91,739.99	13,447.42	94,680.00	94,739.99	13,987.42	97,680.00	97,739.99	14,527.42	100,680.00	100,739.99	15,067.42
91,740.00	91,799.99	13,458.22	94,740.00	94,799.99	13,998.22	97,740.00	97,799.99	14,538.22	100,740.00	100,799.99	15,078.22

12-month PA table

Actual Contributory Earnings (\$)		Member PA (\$)	Actual Contributory Earnings (\$)		Member PA (\$)	Actual Contributory Earnings (\$)		Member PA (\$)	Actual Contributory Earnings (\$)		Member PA (\$)
100,800.00	100,859.99	15,089.02	102,000.00	102,059.99	15,305.02	103,200.00	103,259.99	15,521.02	104,400.00	104,459.99	15,737.02
100,860.00	100,919.99	15,099.82	102,060.00	102,119.99	15,315.82	103,260.00	103,319.99	15,531.82	104,460.00	104,519.99	15,747.82
100,920.00	100,979.99	15,110.62	102,120.00	102,179.99	15,326.62	103,320.00	103,379.99	15,542.62	104,520.00	104,579.99	15,758.62
100,980.00	101,039.99	15,121.42	102,180.00	102,239.99	15,337.42	103,380.00	103,439.99	15,553.42	104,580.00	104,639.99	15,769.42
101,040.00	101,099.99	15,132.22	102,240.00	102,299.99	15,348.22	103,440.00	103,499.99	15,564.22	104,640.00	104,699.99	15,780.22
101,100.00	101,159.99	15,143.02	102,300.00	102,359.99	15,359.02	103,500.00	103,559.99	15,575.02	104,700.00	104,759.99	15,791.02
101,160.00	101,219.99	15,153.82	102,360.00	102,419.99	15,369.82	103,560.00	103,619.99	15,585.82	104,760.00	104,819.99	15,801.82
101,220.00	101,279.99	15,164.62	102,420.00	102,479.99	15,380.62	103,620.00	103,679.99	15,596.62	104,820.00	104,879.99	15,812.62
101,280.00	101,339.99	15,175.42	102,480.00	102,539.99	15,391.42	103,680.00	103,739.99	15,607.42	104,880.00	104,939.99	15,823.42
101,340.00	101,399.99	15,186.22	102,540.00	102,599.99	15,402.22	103,740.00	103,799.99	15,618.22	104,940.00	104,999.99	15,834.22
101,400.00	101,459.99	15,197.02	102,600.00	102,659.99	15,413.02	103,800.00	103,859.99	15,629.02	105,000.00	105,059.99	15,845.02
101,460.00	101,519.99	15,207.82	102,660.00	102,719.99	15,423.82	103,860.00	103,919.99	15,639.82	105,060.00	105,119.99	15,855.82
101,520.00	101,579.99	15,218.62	102,720.00	102,779.99	15,434.62	103,920.00	103,979.99	15,650.62	105,120.00	105,179.99	15,866.62
101,580.00	101,639.99	15,229.42	102,780.00	102,839.99	15,445.42	103,980.00	104,039.99	15,661.42	105,180.00	105,239.99	15,877.42
101,640.00	101,699.99	15,240.22	102,840.00	102,899.99	15,456.22	104,040.00	104,099.99	15,672.22	105,240.00	105,299.99	15,888.22
101,700.00	101,759.99	15,251.02	102,900.00	102,959.99	15,467.02	104,100.00	104,159.99	15,683.02	105,300.00	105,359.99	15,899.02
101,760.00	101,819.99	15,261.82	102,960.00	103,019.99	15,477.82	104,160.00	104,219.99	15,693.82	105,360.00	And up	15,899.97
101,820.00	101,879.99	15,272.62	103,020.00	103,079.99	15,488.62	104,220.00	104,279.99	15,704.62			
101,880.00	101,939.99	15,283.42	103,080.00	103,139.99	15,499.42	104,280.00	104,339.99	15,715.42			
101,940.00	101,999.99	15,294.22	103,140.00	103,199.99	15,510.22	104,340.00	104,399.99	15,726.22			

Help available

Canada Customs and Revenue Agency (CCRA)

(PA Calculation questions)
English 1-800-267-3100
French 1-800-267-5565
www.ccra-adrc.gc.ca

OMERS Client Services

One University Ave.
Suite 700
Toronto ON M5J 2P1
Phone: 416-369-2444 or 1-800-387-0813
Fax: 416-369-9704
e-mail: employer@omers.com

The OMERS Pension Plan registration number is: 0345983
The registration number must appear on all your OMERS members' T4 slips.